

Vitalize Your Body Energy



Contact Your Light Stream Distributor Crystal Frost
CrystalLightStream@hotmail.com - 310-948-1592

With Revolutionary Quantum Vibrational Jewelry

Table of Contents

Introduction

Chapter 1 - A Brief History of Quantum Jewelry

Chapter 2 - The Energy Fields of the Universe

Chapter 3 - The Shapes of the Universe

Chapter 4 - Theory of Healing with Energy Fields

Chapter 5 - The New Revolution in Technology

Chapter 6 - The 7 to 10 Energy Centers of the Body

Chapter 7 - The Series of Quantum Pendants

Chapter 8 - Scientific and Physiological Testing of the Pendants

Chapter 9 - How to use your Quantum Pendants

Chapter 10 - Catalog

Stones have a great hidden purpose in nature. They possess a great untapped power. They have memory!



Stones hold vibrations and they can transmit vibrations!

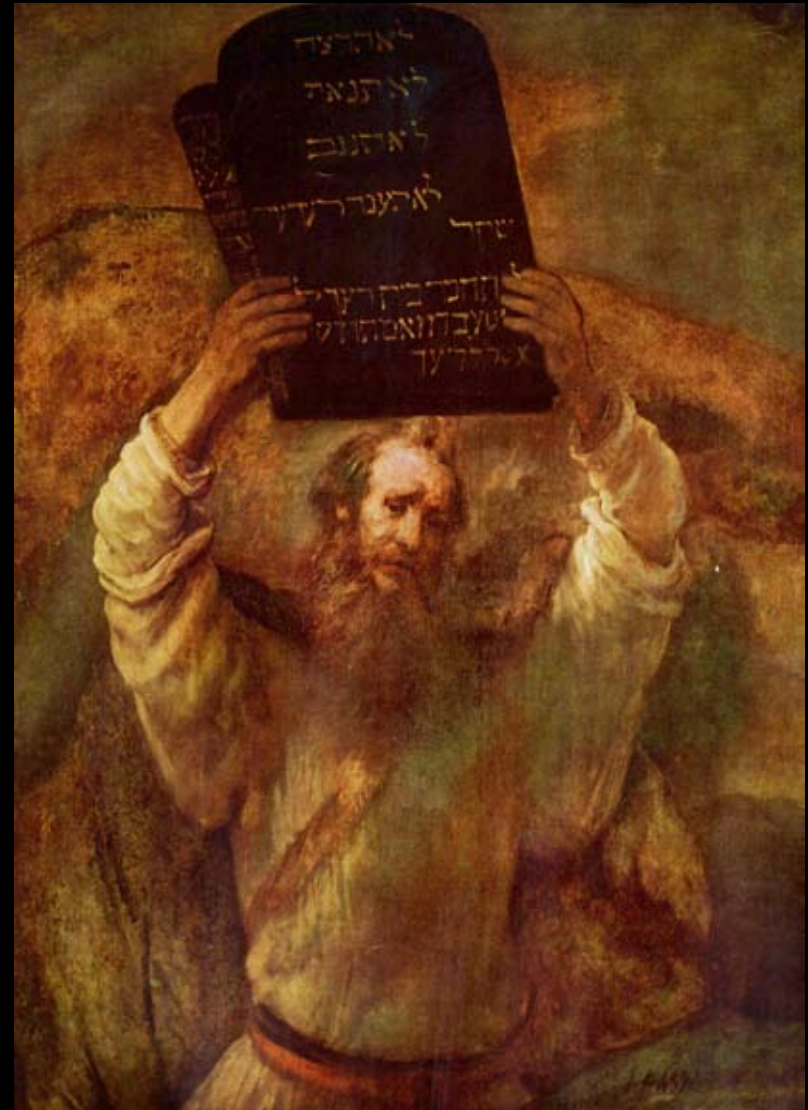
And if thou wilt make me an altar of stone, thou shalt not build it of hewn stone, for if thou lift up thy too upon it, thou hast polluted it.

The Bible: (Exodus 20:25)

If God did not want us to make an altar of carved or crafted stone in any graven image for use in communion with God, what could God do to make this natural, un-hewn stone a communications device between human and the Divine?

The mystery is the greatest unknown secret of the Stone Masons of the highest 33rd degree. Stone has electrical capacitance, and where there is electrical capacity, memory and vibration can be stored. God placed a secret vibration in the stone to allow humans to contact the Divine.

Even though there is aesthetic beauty in stone masonry, architecture and design of the spiritual temples of all religions, we strayed away from God's purpose in placing spiritual vibration in stone by instead placing symbols, letters, design and numbers in stone, giving these symbols more importance than spiritual vibration.



When a monk or nun prays over their stone, wood or metal beads, over hundreds of thousands of repetitions, their pendant takes on the vibrations of those prayers. It is no secret that if you held the prayer beads or pendant of a great saint, or advanced meditator, you can receive a transmission of that presence. That is why such pendants are sought after by collectors.



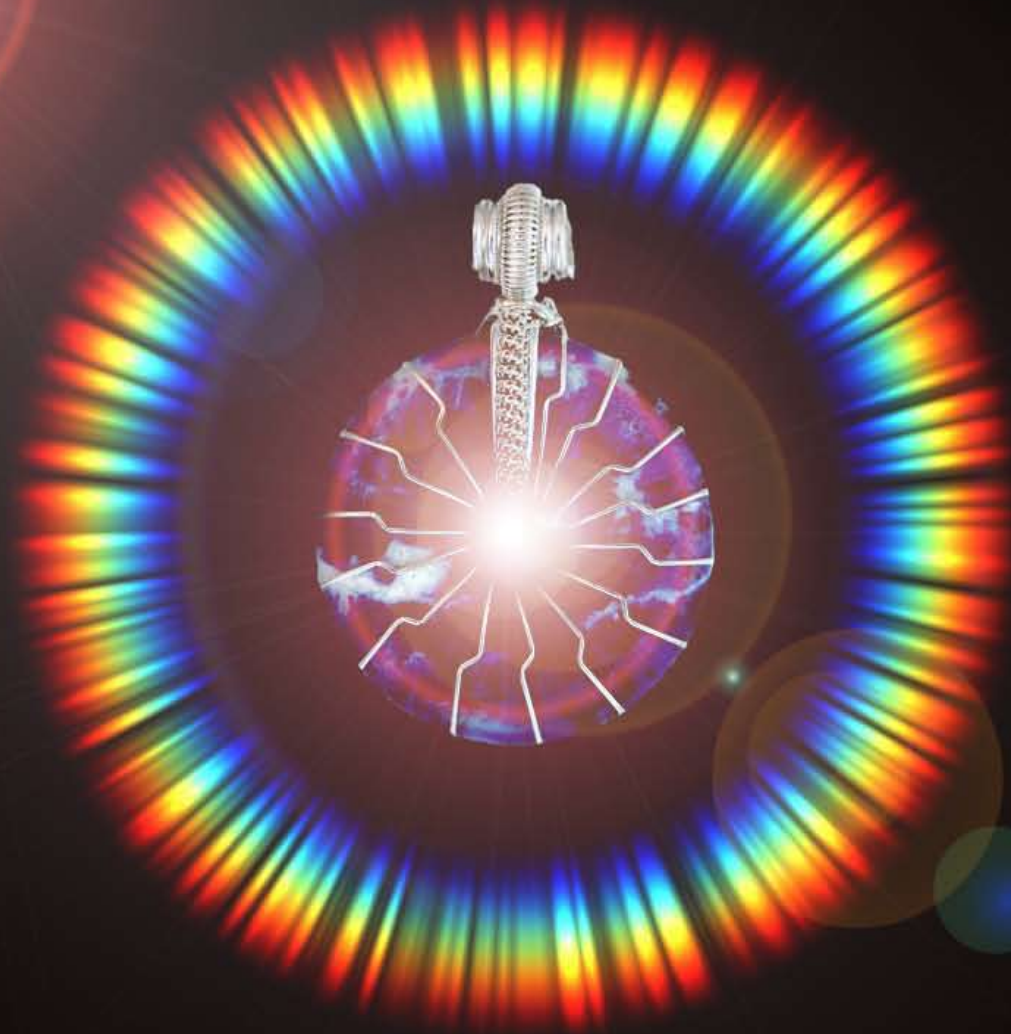
With advanced Quantum Energy technology at Light Stream Technologies, David Sereda has found a way to condense this process. Using a series of 5 quantum energy generators, we can now place religious or natural harmonic vibrations into stone, crystal or natural materials.

About the Author: David Sereda has been practicing meditation daily for over 30 years. He has studied world religions and philosophy for the same duration. He is a well-known ecologist (having personally planted 1.3 million trees over 22 years), free thinking space and quantum scientist, who has worked with world class physicists, (spoke in Congress on nuclear fusion in 1993), and spiritual explorer, who reaches millions of people on radio and TV shows.



He is a film producer/Director of several documentaries including The Voice, Quantum Communication, Mona Lisa's Little Secret, Dan Aykroyd, Unplugged on UFOs, From Here to Andromeda, etc. He has appeared on Fox, TLC, History Channel, ABC, CNN Anderson Cooper, Coast to Coast AM with Art Bell and George Noory and dozens of other radio shows world wide since the year 2000. His goals are consciousness development, science, ecology, healing and modern technology for a sustainable world.

Light Stream Technologies



Quantum Vibrational Jewelry

Light Stream sacred jewelry is designed and treated with the energies and shapes of the quantum and macro universe!



Wear beautiful jewelry that gives you access to the infinite energy of the Zero Point Field! When you put it on, your vibration goes higher.

Ancient Healing Stone Technology Meets Modern Quantum Technology for the First Time

All of the ancient religions of the world spoke about the healing powers of stones. These were not ordinary stones, but stones that stored spiritual vibrations.



At the University of California at Stanford, in 1994, scientists discovered a way to put a movie of the Mona Lisa and a humming bird in a crystal and then retrieve it. They discovered that crystals may become the hard drives of the future.

At Light Stream Technologies, using quantum technology, we are able to put a zero-point energy conduit, healing or spiritual prayer vibrations in our jewelry. This jewelry carries a vibration that can scientifically be measured by anyone who touches it.

Light Stream Quantum Vibrational Jewelry is Energized and Treated with the fields of the Quantum Universe's Energy.



Level 1 Pendant

Level 2 Pendant

Level 4 Pendant

level 5 Pendant

There are currently 6 levels of the stone technology. Level 2 technology can raise your vibration starting at a factor of 2. Level 2 to 6 technology can raise your vibration by a factor of 3 to 12 or higher. This is scientifically tested.

Chapter 1

A Brief History of Quantum Jewelry

All of the World's Religions Knew

the Secret to the Power of Light, Matter
and the Universal Force.



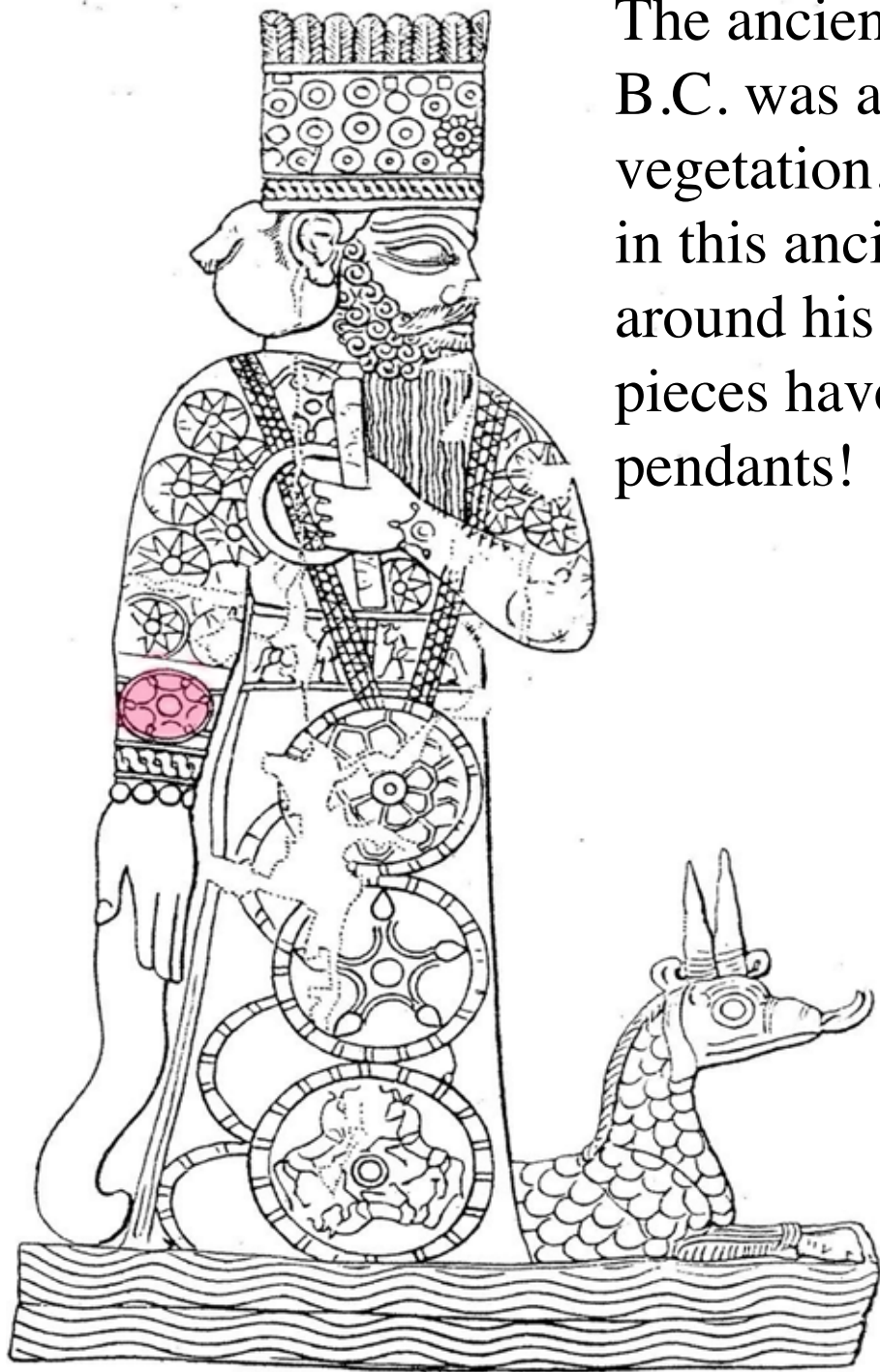
The Gods of ancient Sumer wore the toroid with rotational windings on both wrists. It is believed that these CD shaped discs were like computer discs.

The gods of ancient Sumer, today's Iraq, were the teachers of the birth of the first modern civilization.

Zechariah Sitchin, author and Sumerian scholar believes the discs were real computer discs called MEs that were used to store knowledge, vibration and blueprints.

If plastic CDs can store information today, why can't capacitor stone do the same thing? It can!





The ancient God Marduk from the 18th century B.C. was attributed to powers over water, vegetation, judgment, and magic. He is seen here in this ancient relief wearing the toroidal pieces around his neck and around his wrist. All of the pieces have windings such as in the Light Stream pendants!



Light Stream Level IV Pendant



The Great Pyramid and its companions were the largest stone monoliths in the world. Could they have been giant ancient resonators?

Many mathematicians have theorized the great possibilities for their purpose and use in ancient culture.

The ratios and alignment of the 3 pyramids at Giza to the star system of Orion's Belt have puzzled historians for generations.

Could ancient stone technology have been so advanced, it went right over the heads of archaeologists?

Human Beings Evolved from the Stone Age, to the Bronze Age, to the Iron Age and now to the Modern, Hi-Technology Age.



There was a deep secret about the stones that no one had discovered until now. Light Stream Technologies has unlocked the secret to the stones with hi-technology.

In the Bible book of Exodus 28, we can see an early example of the use of sacred jewelry as God instructs Moses' brother Aaron to construct a blue robe called the "Ephod" to be worn with a technological breastplate of gems before approaching God in the temple.

Exodus, 28: Verses; 15 And thou shalt make the breastplate of judgment with cunning work; after the work of the ephod thou shalt make it; of gold, of blue, and of purple, and of scarlet, and of fine twined linen, shalt thou make it. 16 Foursquare it shall be being doubled; a span shall be the length thereof, and a span shall be the breadth thereof. 17 And thou shalt set in it settings of stones, even four rows of stones: the first row shall be a sardius, a topaz, and a carbuncle: this shall be the first row. 18 And the second row shall be an emerald, a sapphire, and a diamond. 19 And the third row a ligure, an agate, and an amethyst. 20 And the fourth row a beryl, and an onyx, and a jasper: they shall be set in gold in their inclosings. 21 And the stones shall be with the names of the children of Israel, twelve, according to their names, like the engravings of a signet; every one with his name shall they be according to the twelve tribes...

What was the advantage that these sacred stones gave Aaron when communing with God? Did they change his body frequency so that his prayers would be finely tuned and amplified?

Can we use sacred stones charged with spiritual energy to give us an advantage?

God and Sacred Jewelry

The use of sacred jewelry in the Bible and the placement of it is one of the greatest mysteries. When Jesus was born, the three wise men gave him gold, Frankincense and Myrrh. The Gold, Frankincense and Myrrh were used in a combination to create an energetic combination to help protect the baby Jesus.



Many scholars believe the Frankincense and Myrrh were in the form of a hard stone-like sap. What was the purpose of the gold and hard sap? Was it to make a sacred piece of jewelry for the baby Jesus? Would this serve a divine purpose?



The great question is, why did the Saints need or feel a purpose to use certain gemstones and precious metals in spirituality and healing?

In the Bible, Book of Revelation, Chapter 21 (King James Version), we can see the most awesome representation of the sacred gemstones and precious metals throughout the various numbered verses, which include the use of gemstones in The New Jerusalem, or God's perfect city as it appeared to St. John the Divine.

We can also see each Gemstone has a specific purpose in the New Jerusalem. The great Stone Masons and secret societies around the world studied the secret powers of certain stones.

At Light Stream Technologies, we study the powers of certain stones in the laboratory to see which ones can improve the human energy system the most. We choose the most powerful stones while considering the price as well as the energy affects and effects.

Revelation 21

1. And I saw a new heaven and a new earth: for the first heaven and the first earth were passed away; and there was no more sea.

2. And I John saw the holy city, new Jerusalem, coming down from God out of heaven, prepared as a bride adorned for her husband.

10. And he carried me away in the spirit to a great and high mountain, and shewed me that great city, the holy Jerusalem, descending out of heaven from God,

11. Having the glory of God: and her light was like unto a stone most precious, even like a jasper stone, clear as crystal;

12. And had a wall great and high, and had twelve gates, and at the gates twelve angels, and names written thereon, which are the names of the twelve tribes of the children of Israel:

18. And the building of the wall of it was of jasper: and the city was pure gold, like unto clear glass.

19. And the foundations of the wall of the city were garnished with all manner of precious stones. The first foundation was jasper; the second, sapphire; the third, a chalcedony; the fourth, an emerald;

20. The fifth, sardonyx; the sixth, sardius; the seventh, chrysolite; the eighth, beryl; the ninth, a topaz; the tenth, a chrysoprasus; the eleventh, a jacinth; the twelfth, an amethyst.

21. And the twelve gates were twelve pearls: every several gate was of one pearl: and the street of the city was pure gold, as it were transparent glass.

This shows us that these precious stones had a purpose in God's New City of Jerusalem. It also gives us a clue as to how we can use them, and how to prepare them for sacred use. The keys are deeply hidden in design, architecture and numerical values.

The stones on their own cannot have the power. They must be charged with the energies of the fields of the universe and the God force. The question is, what is this secret force? Is it Zero Point Energy? If so, where do we find it and how do we infuse this energy in the sacred stones to give them power?

In the Bible, Book of Revelation, we can see the secret appears again in Chapter 4:

2. And immediately I was in the spirit: and behold, a throne was set in heaven, and one sat on the throne.

3. And he that sat was to look upon like a jasper and a sardine stone: and there was a rainbow around the throne, in sight like unto an emerald.

This shows us both the stone and the aura of the stones like a rainbow. The aura is the field generated by the stones. What is the purpose? Can we see the secret emerging?



The use of sacred stones in spiritual and healing practice crosses religions and mysticism all over the world. Healing stones were used by the ancient Hindus, Greeks, Druids, Sumerians, Aztecs, Myans, Native American Indians, Jews, Christians, Muslims and more. The Native American Indians called the stones, “The Stone People.” The Stone People were history and energy keepers.



Photo of Lakota Wallace Black Elk by David Sereda

Today, new understandings of quantum physics and science are allowing us at Light Stream Technologies to go beyond what the ancient peoples knew about the powers of gems, stones and stone technology.

The philosopher's stone

(Latin: lapis philosophorum; Greek: chrysopoeia) is a legendary alchemical tool for transformation. It was the key to the turning of the 4 base metals into gold. It was also sometimes believed to be an elixir of eternal life, useful for rejuvenation and possibly for achieving immortality. For a long time, it was the most sought-after goal in Western alchemy. In the view of alchemists like Sir Isaac Newton and Nicolas Flamel familiarity with the philosopher's stone would bring enlightenment upon the maker and conclude the Great Work.



In Islam, The Most Holy Shrine The Kaaba “Cube” is a cuboidal building in Mecca, Saudi Arabia, and is the most sacred site in Islam.



The Kaaba is a large stone structure in the shape of a cube. It is a large granite stone from the hills near Mecca. The four corners of the Kaaba roughly face the four points of the compass. In the eastern corner of the Kaaba is the Ruknu l-Aswad “Black Stone” al-Hajaru l-Aswad. This stone is considered so sacred to the Muslims, all Muslims must come at least once in their lifetime in pilgrimage to experience it. What powers does this stone possess? Once again, why do we see the stone holding the energy of God?

Smithsonian Magazine reported in October, 2008, “New Light on Stonehenge. The first dig in 44 years within the inner circle changes our view of why—and even when—the monument was built.” It turns out, 2 of the nation’s top archaeologists believe it was a place of healing and the stones held the power. The question is, why and how did these stones become special?



Stonehenge has now been dated from 2,200 to 3,000 B.C.E.

The British poet Layamon, inspired by the folkloric accounts of 12th-century cleric Geoffrey of Monmouth, wrote in A.D. 1215:

The stones are great;
And magic power they have;
Men that are sick;
Fare to that stone;
And they wash that stone;
And with that water bathe away their sickness.

It appears the stones had the power to transform the waters that flowed over them into healing water. How then do these stones hold this power? What is the secret to charging stones with healing powers?

At Light Stream Technologies, we use proprietary hi-technology to treat our stones and sacred jewelry with the powers of Zero Point Energy and Frequencies in the Zero Point field that resonate with your higher potential.

A deep space photograph of a galaxy cluster. In the foreground, a large, edge-on galaxy is visible, showing a bright central core and a diffuse, glowing disk. A prominent blue jet extends from the core of this galaxy, stretching across the frame towards the right. The background is filled with numerous other galaxies, some appearing as small, distant points of light, and a dense field of stars. The overall scene is set against a dark, starry cosmic background.

Chapter 2

The Energy Fields of the Universe



The entire universe produces both particles, living beings, planets, stars and fields of energy. The fields of energy connect between all of these systems via the extension of auras. The key to understanding how to increase our energetic potential is to understand how fields work and communicate. When fields are in harmonies, they communicate. When they are in disharmonies, they do not communicate.

“There is no place in this new kind of physics both for the field and matter, for the field is the only reality.” - Albert Einstein

Vibrational medicine and healing focuses on healing the field of a human beings, animals, mammals, water or plant ecology with harmonic frequencies rather than with chemical medicine. Einstein further stated, “The field is the sole governing agency of the particle.” Healing the field is the true way we can heal the body! Future Star Trekian healing technologies are now upon us!

The reason Einstein understood that “the field is the only reality” is because it is the key to knowing how the universal balance of quantum communication works. Everything transmits and receives information through the field.

This means that if we want to manifest anything in our lives, from Love, to Relationships, to Careers and wealth, we have to know how to correct and heal any weaknesses in our energy field. Our energy field and body are comprised atoms, and subatomic particles all of which have extended fields that further extend into the greater fields.

Fields are the unseen energies or light energy that surrounds sub-atomic particles, atoms, molecules, biological cells, human beings, mammals, animals, plants, water, rocks, earth, planets, stars, galaxies and the universe. All of this needs to be in a harmonic balance to allow for healing, communication and manifestation.

Sub-Atomic Particles Spin in Vortices

Light Stream Technologies' Sacred Stone Jewelry utilizes the designs of the nature of sub-atomic spin vortex to enhance your connection to the Zero Point Field. The Zero Point Field is the place of infinite energy in the universe.



Sub-atomic Particles Spiral



Spiral Silver Coil Designs

The nature of all living and non living systems is that we are made of atoms, which are made of subatomic particles. This real photo of sub-atomic particles shows us the nature of what we really are: energy that vibrates in patterns, designs, and frequencies. It is here that we find frequencies and patterns that are either in harmony or disharmony. A dis-harmonic system cannot function and attain its goals.

If We Could See into the Invisible



We would see that the human body emits light or living particles of light called photons. Fritz-Albert Popp, a German biophysicist, proved the existence of bio-photons. All living things, he found, emit light energy including human beings. The human being emits light in the visible and invisible spectrums: from infra-red, to red, orange, green, blue, indigo, violet and ultra-violet.

Once we can accept the idea that our bodies have energy fields, we can understand how fields are as important as Einstein said, “The field is the only reality.” This is because the field of our body affects our health and the functions of everything we experience from our state of mind, mood, and well being. Dis-ease can manifest when our field goes out of order. In fact, when a disease occurs in our energy field, some kind of sickness is bound to follow unless we correct the error or imbalance in our field.

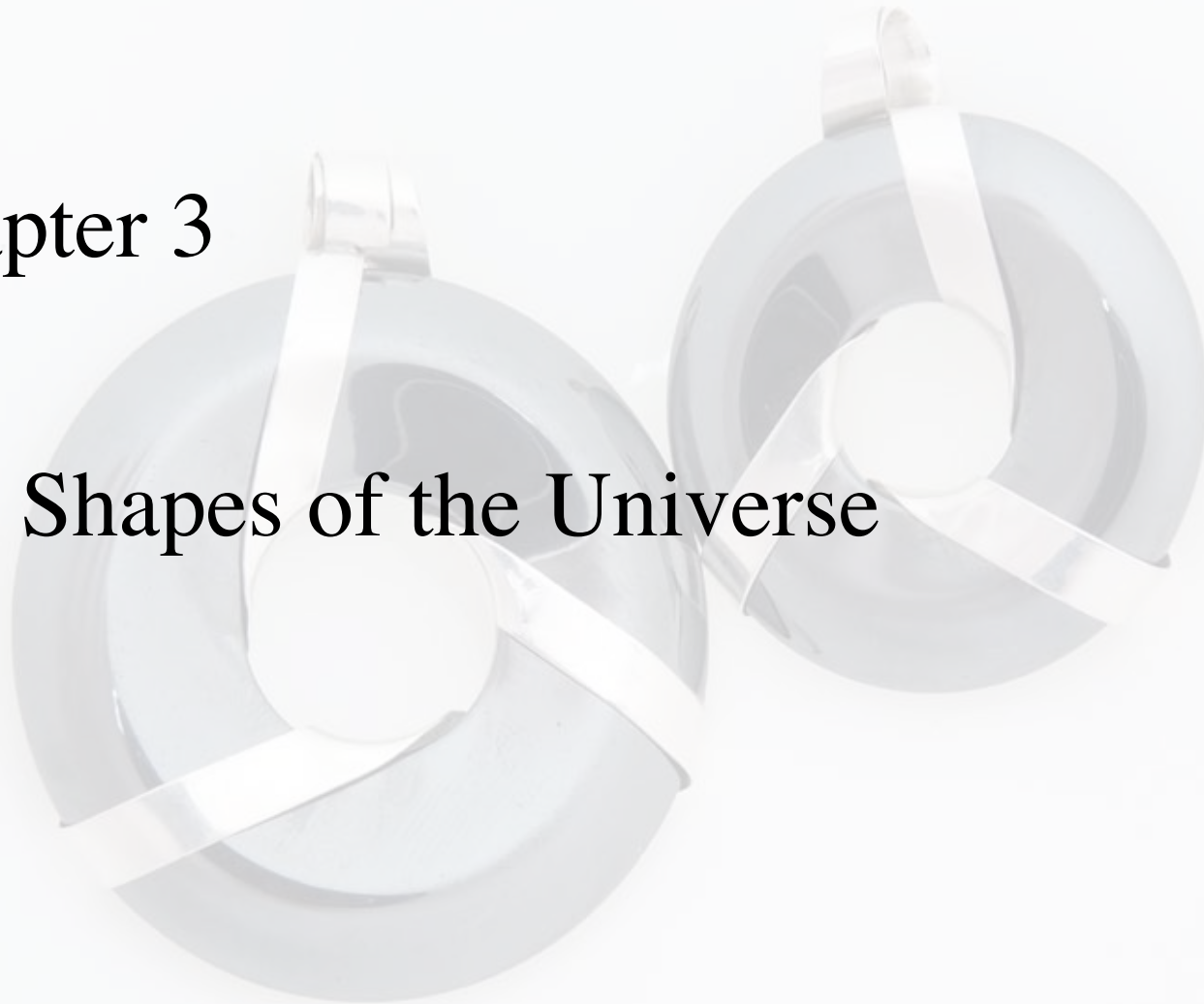
You will discover in this book that Light Stream Technologies’ pendants can help you correct and harmonize your energy field. We have scientifically demonstrated this to be a fact that your body will become stronger and more energetic. This is what the testimony tells us from people who wear our products.

Once we understand that it is through our field that we really communicate with each other, and that our language stems from this, we can also see how to become better at telling the universe what we really want. This means that we can communicate with each other without speaking or even seeing each other. Our thoughts become real forms of energy that go out into the universe kind of like a radio station sends out the daily news. We are also sending out signals just like the news. If we send out beautiful and harmonized frequencies, then we are going to manifest and receive in accordance to this.

The mystery is, why did the ancients use sacred jewelry to assist them in communicating with God or the God force? Is the God force in the field? Do we all have the potential to communicate more efficiently with this force?

Chapter 3

The Shapes of the Universe



The Search for the Shape of the Universe

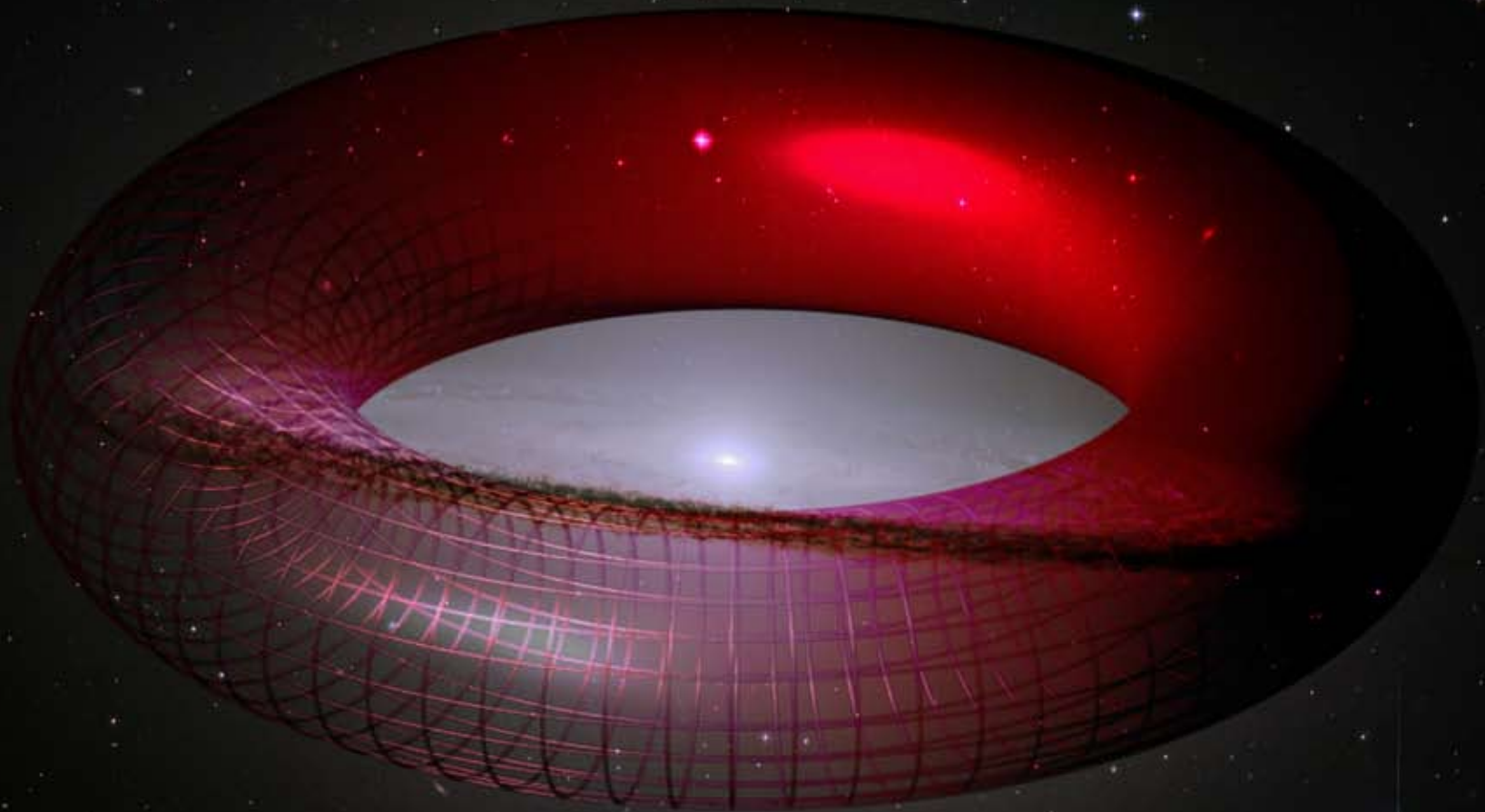
The shape of the universe would be the master discovery in sacred geometry. It is considered to be the Holy Grail of sacred geometry and mathematics. To find it has profound meaning for our understanding of the universe.

Because we know that energy moves through architecture or sacred geometry, and that the energy and geometry combined produce energy fields and those fields are shaped as resonant to their geometry, we can understand creation.

To understand creation means we can create or heal any creation that is out of order simply by knowing this secret. So what is the shape of the universe?



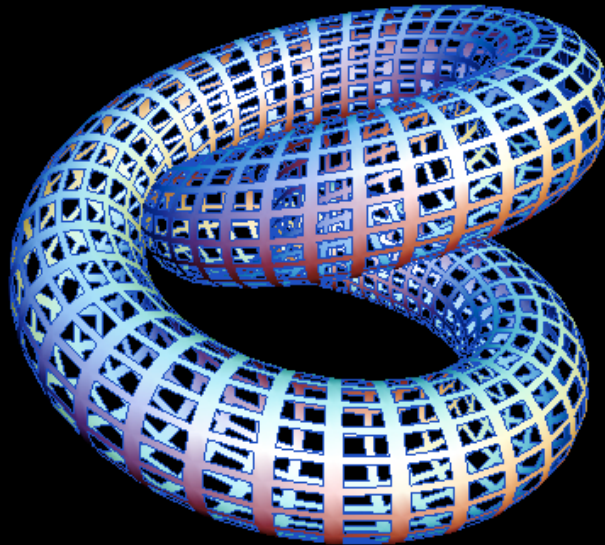
The 4-D Toroid shape has been the strongest contender to an actual shape of the universe.



Because Einstein's theory of relativity proves that space is curved, the curvatures had to eventually form a shape. While the single ring toroid was the most logical contender, the shape was first thought to be the answer. It then got more complicated. While the toroid shape was there, it now appeared to have other dimensions to it.

New Ideas on the Toroidal Universe Model Evolve

Because space is curved, energy moves through its curvature and produces wave patterns of energy. These patterns begin to look familiar to us from the micro universe of atoms and sub-atomic particles to the macro universe of planets, stars, galaxies and the universe itself.



At Light Stream Technologies, we not only design quantum jewelry to these shapes, we charge them with the forces of the zero point field or God energy. When you wear these pieces, you are allowing the zero point energy to move through your body and mind in the designs of the creative forces of the universe.

The Shape of the Universe Tells us Its Secret



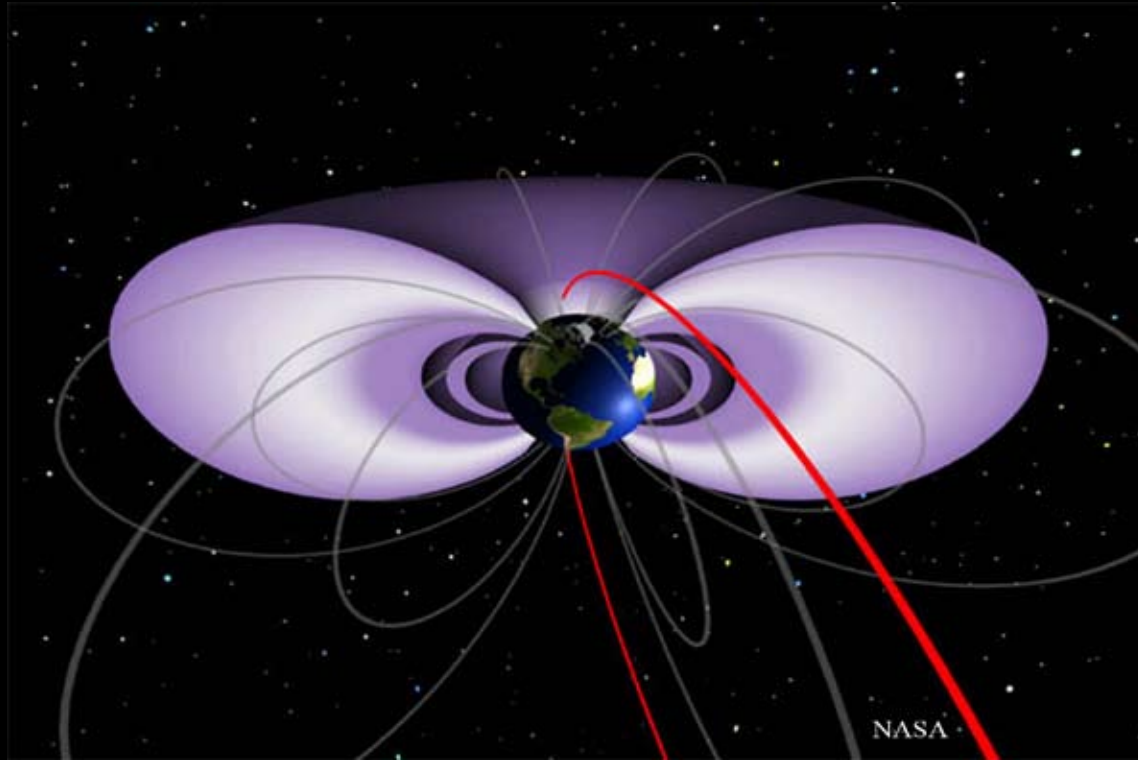
Energy flows through architectures. The sacred geometrical shapes of the universe follow a certain pattern that can be seen everywhere. This photo of a galaxy, much like our own Milky Way galaxy, is spiral shaped, torus or donut-shaped with a black hole at the center.

Our home planet looks like a particle in the universe.
Beyond its spherical physical form, is an energy field
that gives us part of the secret.



NASA scientists have been studying the energy fields of the Earth including their shape, energy patterns and behavior. The Earth's energy gets stimulated by energy from the sun. The sun transmits information to the third rock from the sun.

NASA Reveals the shape of the Earth's Energy Field as a Torus or ring (donut-shaped).



This cross-sectional (cut-away-view) of the toroid shape of the Earth's magnetic field shows a donut or toroid cut in half so we can examine its true shape.

The Human Nervous System uses Electrical Energy

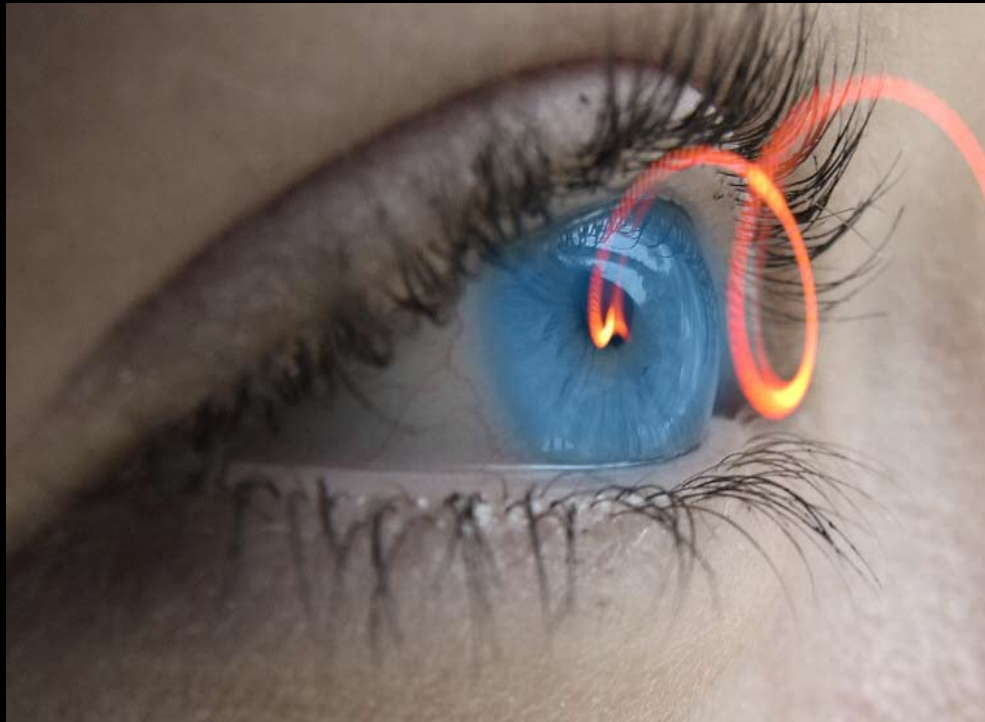
If we were to see the human central nervous system as a copper wire electrical circuit, we could understand that it responds to energy fields. The human system does not work quite the same way as electricity moving through wires does. It is similar and it produces a torus or donut-shaped energy field.



Electricity moves through wires as electrons (charged particles) flow like water down a river (wire). In the human system, positive and negative ions (charged with electrons) flow through both the central and autonomic nervous systems to give electrical impulses to the body. This electrical energy then sets up a field or aura of energy shaped like a torus or donut.

The Shape of the Toroid is in the Human Eye

Everything we see and experience visually we see through the torus, donut shape of the human eye's iris. Our eyes are causing energy in the form of light to flow through this amazing architecture to give us our perception of reality.



Light waves spiral into the eye and spin around the iris (blue) into the pupil (dark hole). This is the shape of the way light energy moves into the eye. It is the same way that planets and stars spin around the black hole at the center of the galaxy and the same way sub-atomic particles spin.

A Flower is Round with Petals

The geometry of nearly all flowers is round with an opening in the center. This center point is the center of its torus.



This is where the energy of the flower has its opening and birth place. This is where bees come to pollinate the flower. All of these examples show this amazing architecture is consistent from the sub-atomic to the macro universe. Now we know the secret to the patterns in which the energy of the universe flows.

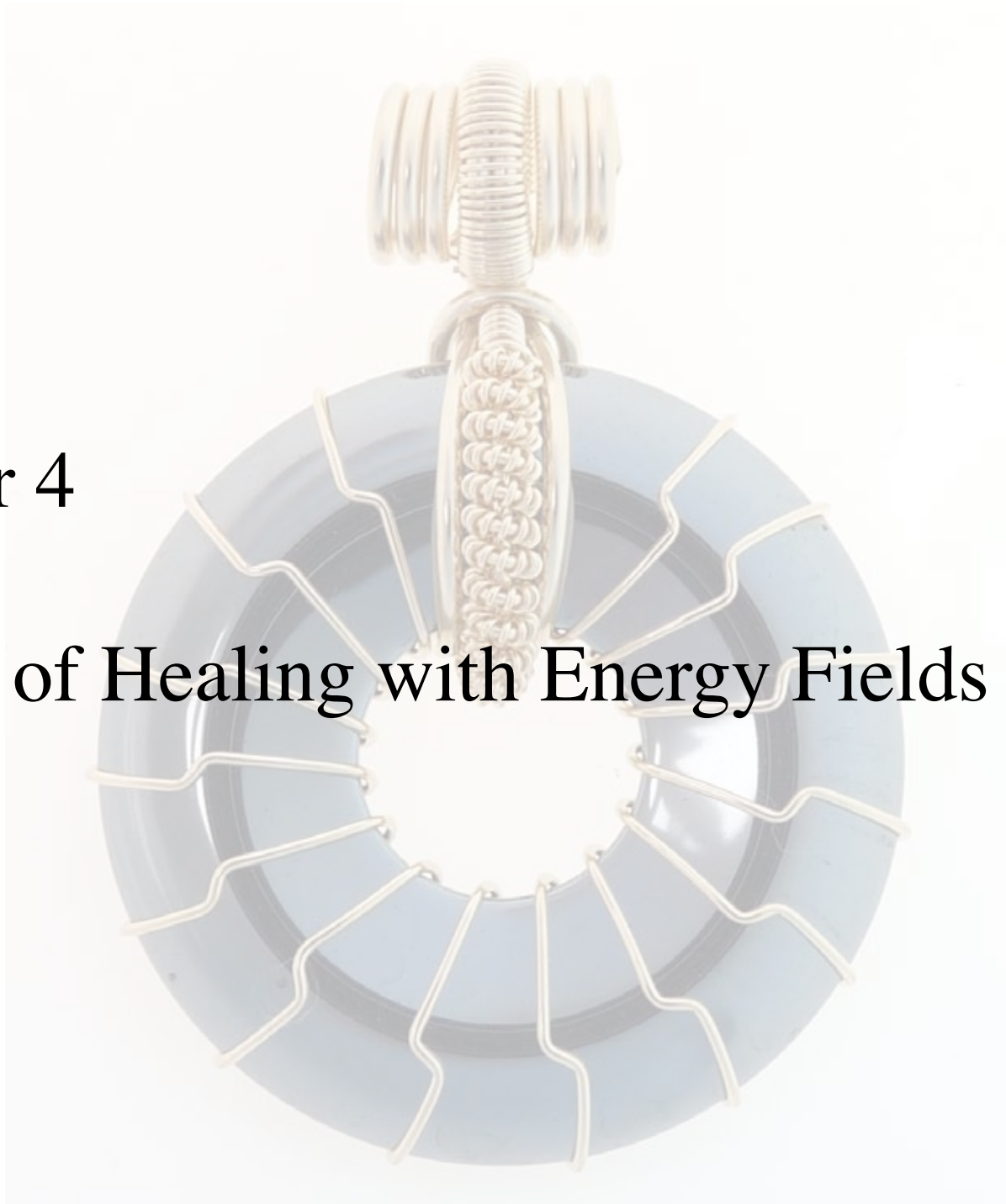
From experiencing the designs of atoms, subatomic particles, the human energy field, the human eye, flowers, the energy field of the Earth and the Universe, we can see the secret emerging.



Light Stream Technologies Quantum Vibrational Jewelry Utilizes the Shapes of the Universe, and the Energies of the Zero Point Field (the God Force).

Chapter 4

Theory of Healing with Energy Fields



Healing with Energy Evolved from Nuclear Science

Radiation Therapy has been in use for decades in the medical profession to try to cure various forms of cancer. The technique uses radioactive ionizing radiation or energy fields to cause the decay of cancer cells in the body.



Actual photo of spinning sub-atomic particles

While this method of using energy fields to treat illnesses, it has no relation to the kinds of energy fields we use to treat our pendants. It simply demonstrates the point that fields of energy can be used for healing. [Light Stream Technologies \(L.S.T.\)](#) does not use radioactive energy fields to treat its stones; rather, we use safe energy fields.

In the area of holistic or natural healing, there have been many technologies that use energy principles to heal the body. Among them were great pioneers:

1. Royal Raymond Rife (May 16, 1888 – August 5, 1971) was an American doctor and scientist who invented the most powerful optical microscope in the world. Rife was of Scottish ancestry, born on in Elkhorn, Nebraska. While attending university, he worked part time for Carl Zeiss (optics used in Hasselblad and many cameras today) at their New York offices. His super microscope was able to observe very small viruses in test tubes. Dr. Rife discovered that cancer viruses had certain harmful frequency vibrations.

Dr. Rife then finds that all harmful viruses had mortality frequencies, meaning, they could be destroyed with certain energy fields. Dr. Rife claimed that many, if not all, contagious diseases could be cured using this energy frequency treatment, using frequencies that were typically in the 10 kHz-100 MHz range. This means that by altering field energy, healing of the body can theoretically happen.

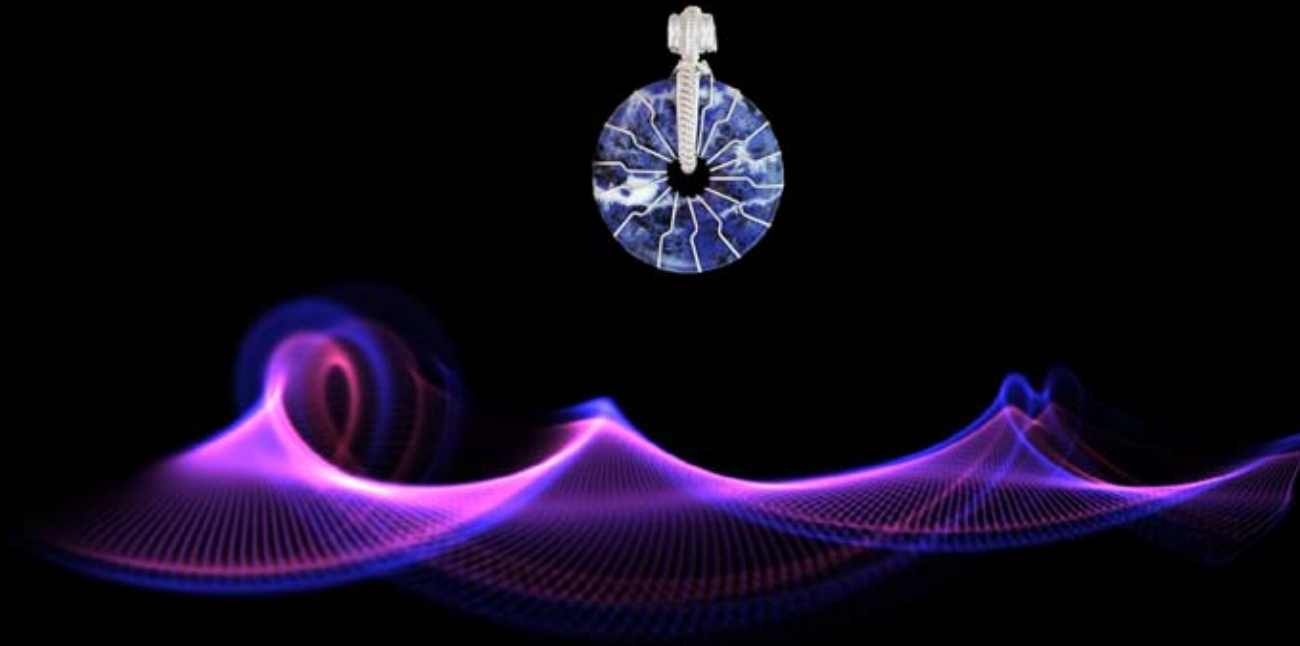
2. Radionics Healing: The discovery of radionics originated during the early 1900s with Albert Abrams (1864-1924). He invented machines that sent healing frequencies at blood samples of an individual to heal them from afar. A healthy person has particular “energy frequencies” vibrating in their body that are harmonious. An unhealthy person has unharmonious ‘energy frequencies’ that suggest disorders. Radionic devices diagnose and heal by applying appropriate frequencies to balance the “discordant” frequencies of illnesses. Ruth Drown was another well-known radionics specialist.

Chapter 5

The New Revolution in Quantum Technology

Light Stream Technologies Pendants are treated by frequencies from the Zero Point Energy Field

The process to actually get the frequencies to stay in the jewelry is a trade secret. We do not play music or sound from a stereo; nor do we use sunlight, intention of spiritual or religious thoughts. These processes are well intended but not permanent. Stones merely vibrate or reflect radio waves, sound waves or intention momentarily. How then do we get stones to hold energetic memory?



In order to get the frequencies to stay in the stone and crystal formations, we have developed a new quantum energy technology. This technology allows the memory of known healing, balancing, and energetic frequencies to lock into the stone and crystal formations similarly the way we put music on a CD or a movie on a DVD.

Do Crystals Have Memory Like a Computer?



In the September 4, 1994, issue of Newsweek, at the University of California, a Stanford team of physicists actually demonstrated that crystals have memory. A 3-D holographic movie of a humming bird and the Mona Lisa were both stored within the subatomic structure of the same crystal and then retrieved. While the particular crystal held only 163 kilobytes of memory, it is predicted that future crystal hard drives could store up to one million megabytes of information. This would mean that future computers would use crystal hard drives because they would make current technology obsolete.

At Light Stream Technologies, we use quantum generators to store not only healing information in our stones, but energetic quantum information that raises the frequency of the human body safely. There are no harmful side-effects. When people wear our jewelry, they are exposing themselves to this quantum information. The energy and information goes into our field and brings energy and balance to our system. This is all proved scientifically.

This is Quantum Vibrational Technology

It looks as simple as a CD or DVD - but it is not. What you are looking at is a combination of ancient technology and super modern technology. Yes, it is amazing that a music or whole movie can exist inside of a DVD made of plastic. It is more amazing that feeling and vibrational energies can now be stored in quantum jewelry.



This new quantum technology is made in the basic shape as the shapes of the universe. What makes it stand far above a DVD or CD technology is that it can hold quantum vibrational energies as well as the same kind of information that CDs and DVDs can. When you wear it, your brain and energy field experiences a positive vibrational shift. It can help you raise your vibration. If you have a positive thought, it magnifies it.

Chapter 6

The 7 to 10 Energy Centers of the Body

The Human Electrical Nervous System

Electricity as we know it, moves through wires and powers all kinds of electrical devices from radios, Television, computers, washers, dryers, and lighting, etc. It is the force that gave us modern technology. Our own bodies are also a modern bio-technology. It took the universe billions of years to create the conditions where human life could evolve.



Ions flow through our nervous systems like an electric current to supply energy to the various functions of a human being. An ion is an atom or molecule with a positive or negative electrical charge. These ions are made of atoms, which are then made of positive and negatively charged sub-atomic particles.

There are 7 Vital Energy Centers of the Body



These Centers are Vortices of Energy that Radiate and respond to the 7 Colors of the Rainbow Spectrum.

Color Theory and the 7 Energy Centers

Sir Isaac Newton, (4 January 1643 – 31 March 1727) was an English physicist, mathematician, astronomer, natural philosopher, alchemist, and theologian and one of the most influential scientists in human history. His theory of color demonstrates how each color has a polarity color as such:

1. When white light from the sun strikes any object, that object absorbs the opposite color(s) to the color of the object we are observing. A blue ball is radiating blue light while absorbing the red spectrum of colors.
2. As each of the 7 energy centers of the body does the same, they radiate out a particular color and absorb the opposite, we need to understand how to apply this to color energy treatment therapy.
3. If we want to heal or conserve an energy center's color energy, we need to wear a Light Stream Level I, II, III or IV stone that is the polarity or opposite color to that energy center.
4. For example, if we want to keep more green energy for our heart center, we need to wear the red stone. Red reflects off or emits red and keeps green. If we want to radiate off more green energy, we then would wear green for that center.

There are 7 main energy centers in the body from ancient East Indian and Modern sources. These centers can be located along the central electrical channel of the spine. Each center has a main color and a polarity color:

1. The Sex Center at the base of the spine. This center controls the flow of life force energy at the root level of our electric body whether we are in a sexually active state or not. This is where our sexual organs are. This center is symbolized the by the color red. Its polarity color is turquoise light blue.
2. The Survival Center is located at the navel. This center controls the flow of survival instinct energy. This is where our intestinal tract is. It buzzes when we feel threatened by money, family, clothing or food. It relaxes when all of our needs are taken care of. It is symbolized by the color orange. Its polarity color is blue.
3. The Motivation Center is located at the sternum or rib cage center. This is where our adrenal glands, spleen are and our liver is. This center becomes active when we are excited or driven to become active or lack of when we do not. It is symbolized by the color yellow. Its polarity color is indigo.
4. The Heart Center is located in the center of the chest. This is where our heart connects to the spine. This is the most powerful center of the body. This is where we feel deep love and ecstasy or depression. It is symbolized by the color green. Its polarity color is light red.

5. The Communication Center is located in the throat where our vocal cords are located. This is the center where we communicate and feel truth. When we tell our truth we resonate well. When we lie, we get blocked in this center. This center is symbolized by the color blue. Its polarity color is orange.

6. The Vision Center is located between the eyes. This is where we experience inner visions. These visions can relate to any of the other centers. We visualize our sexual or life force needs in this center, our desires, our blue prints for reality, our love, and our cosmic connection to the divine. This center is symbolized by the color indigo. its polarity color is yellow.

7. The Universal Connector Center is located at the top of the head. It is the center where we connect to the cosmos and the divine. When all 6 of the lower centers are balanced and healthy, this center lights up and connects us to our highest potential as consciousness and knowledge. This is where we experience cosmic consciousness in an order of 9 potential levels. This center is symbolized by the color violet. Its polarity color is green.

As you get to know the Light Stream Technologies' pendants, you will see how you can learn to use your stones to help activate each of the 7 energy centers. As each center has a polarity color and energy, you can learn how to activate both aspects of each center's energies. More of this will appear later.

The 7 Energy Centers of the Body Respond to the 7 Light Stream Tech. Chakra Stones.



Find the Stone that matches the color of each energy center or its polarity color to treat or give more energy to a particular energy center. Level 1 stones multiply energy, on average, by a factor of 2 to 5. Level 2 - 6 stones can multiply the energy, on average, by a factor of 5 to 12.

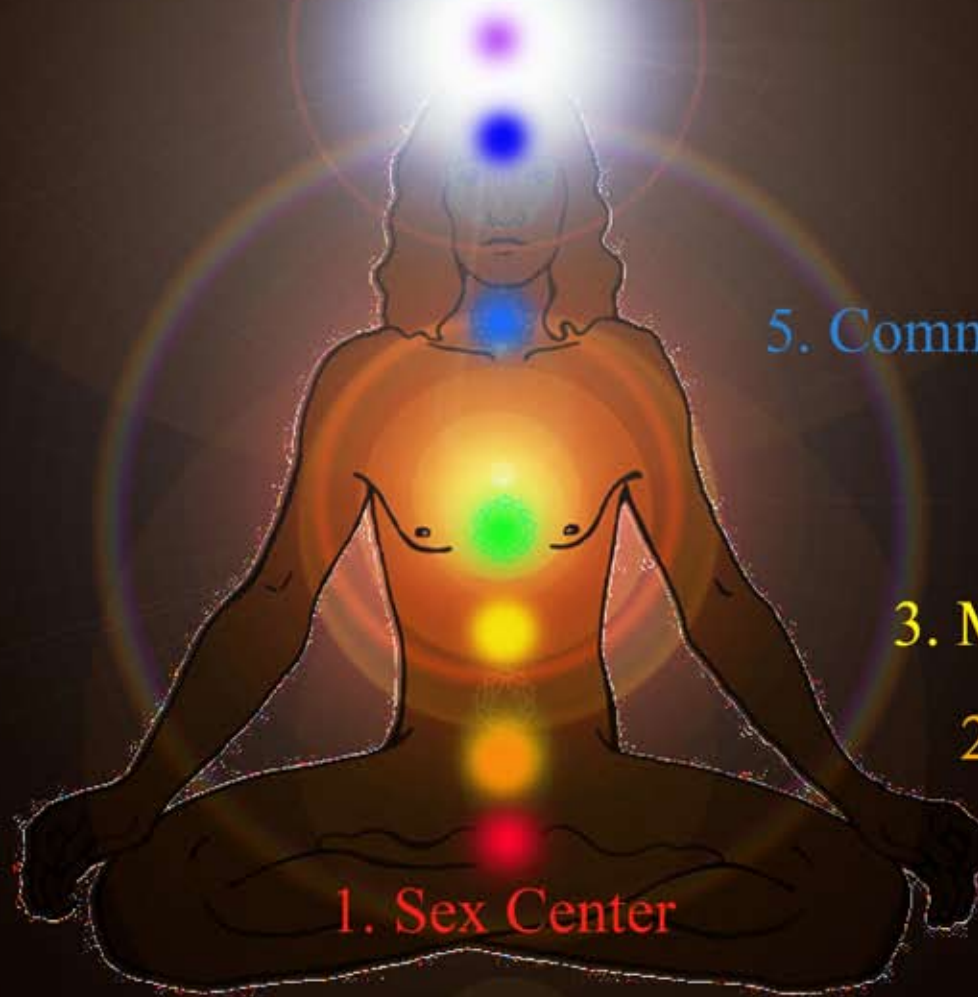


Level 1 Stone

7. Universal Connector Center



Level 4 Stone



6. Vision Center

5. Communication Center

4. Heart Center

3. Motivation Center

2. Survival Center

1. Sex Center

Wear the Stone that matches an energy center color or its polarity color to bring more energy to that center. Wear the energy center main color to radiate more energy from that center. Wear its polarity color to absorb more energy into that center.



Illustrated Polarity Colors of each Energy Center
use stones closest to polarity color as such.

Chapter 8



Level 1



Level 4

Scientific and Physiological Testing of the Stone Pendants

These simple stone pendants are treated with frequencies of Tachyons (faster than light energy), The NASA Sound of the Sun, The Tree of Life, and Sacred Harmonic Codes. They have been scientifically tested with aura cameras and millivolt meters as follows:

1. People's auras are photographed before wearing a pendant. Then their base line millivolts are measured in their body.
2. After they wear the pendants, their aura is re-photographed and their millivolts are measured. The results are astounding. The aura gets much brighter and the millivolts go upwards to much more healthy levels. What this means is this:

1. After testing over 700 people's millivolts in their nervous systems, we have found people with depression, Multiple Sclerosis, or any kind of low energy problems, register lower than average on the meter.

2. Every person who wears the pendants in seconds their energy goes up on the meter. After weeks, they report feeling much better.

3. Any person can experience improvements with the pendants.

4. Healers, athletes and even psychics have higher voltage in their body than the average person. These pendants help the average person get their energy to super levels.

Bio-Energy Resonance & Transference

When people touch, wear and hold the Light Stream Technologies' Pendants, they feel an energy quality and vibration enter their body on a subtle and gross level. On a subtle level, you can sometimes feel a light tingling.



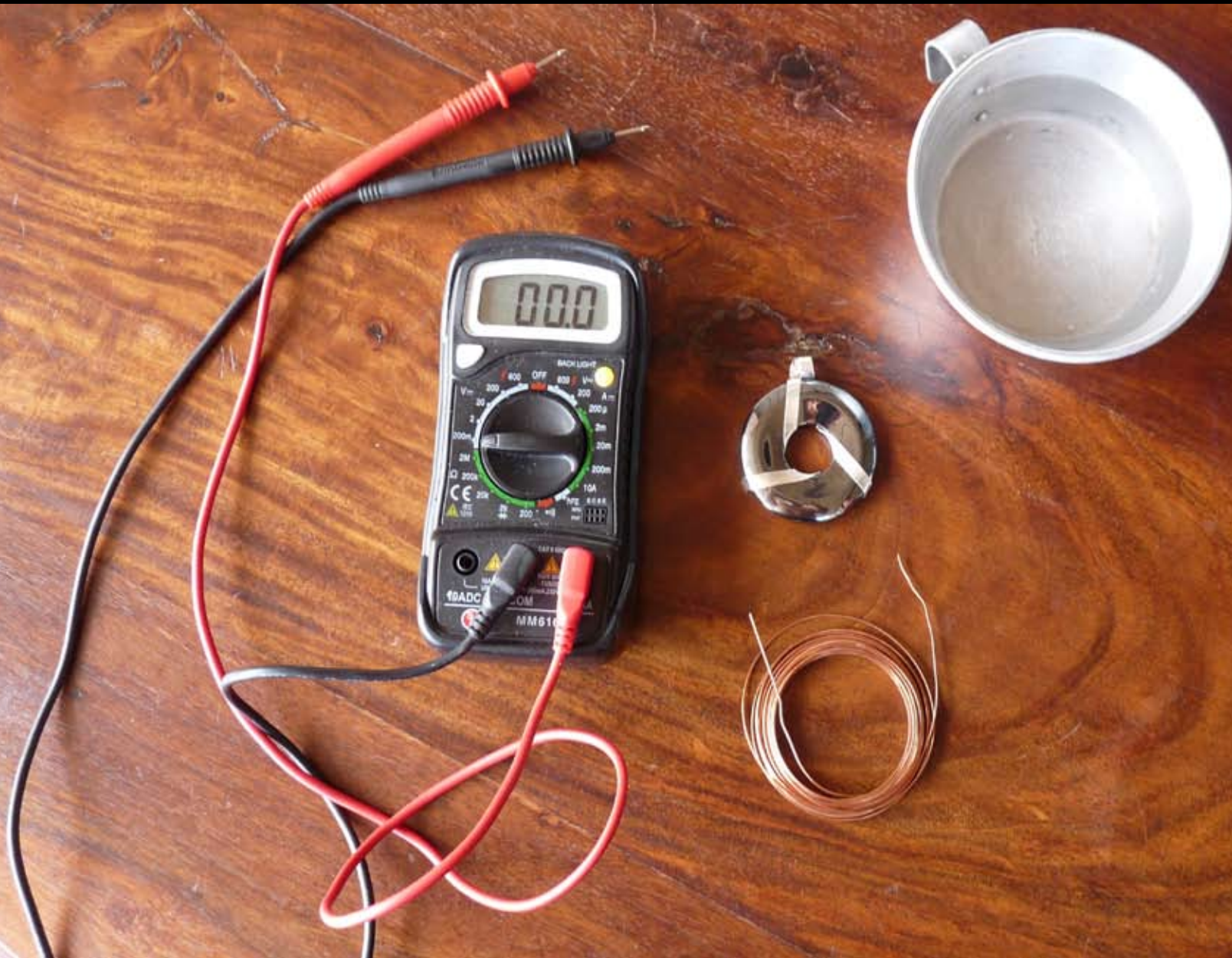
Level 1 Stone



Level 4 Stone

When we muscle test or Kinesiology test utilizing the science of human movement, we can see an increase in mental, muscle and coordination performance. People feel more rooted and balanced. At Light Stream Technologies, we decided to do a simple voltage test on the human body before and during contact with the Level 1 through 6 pendants. The results were obvious. There was a dramatic improvement in the flow of human bio-electricity in the body.

What you need to volt meter test - Volt meter in the V - 200m setting, as you turn the dial to the left. Also, you can use the Pendant, water dish and wire - copper, silver, gold, etc.



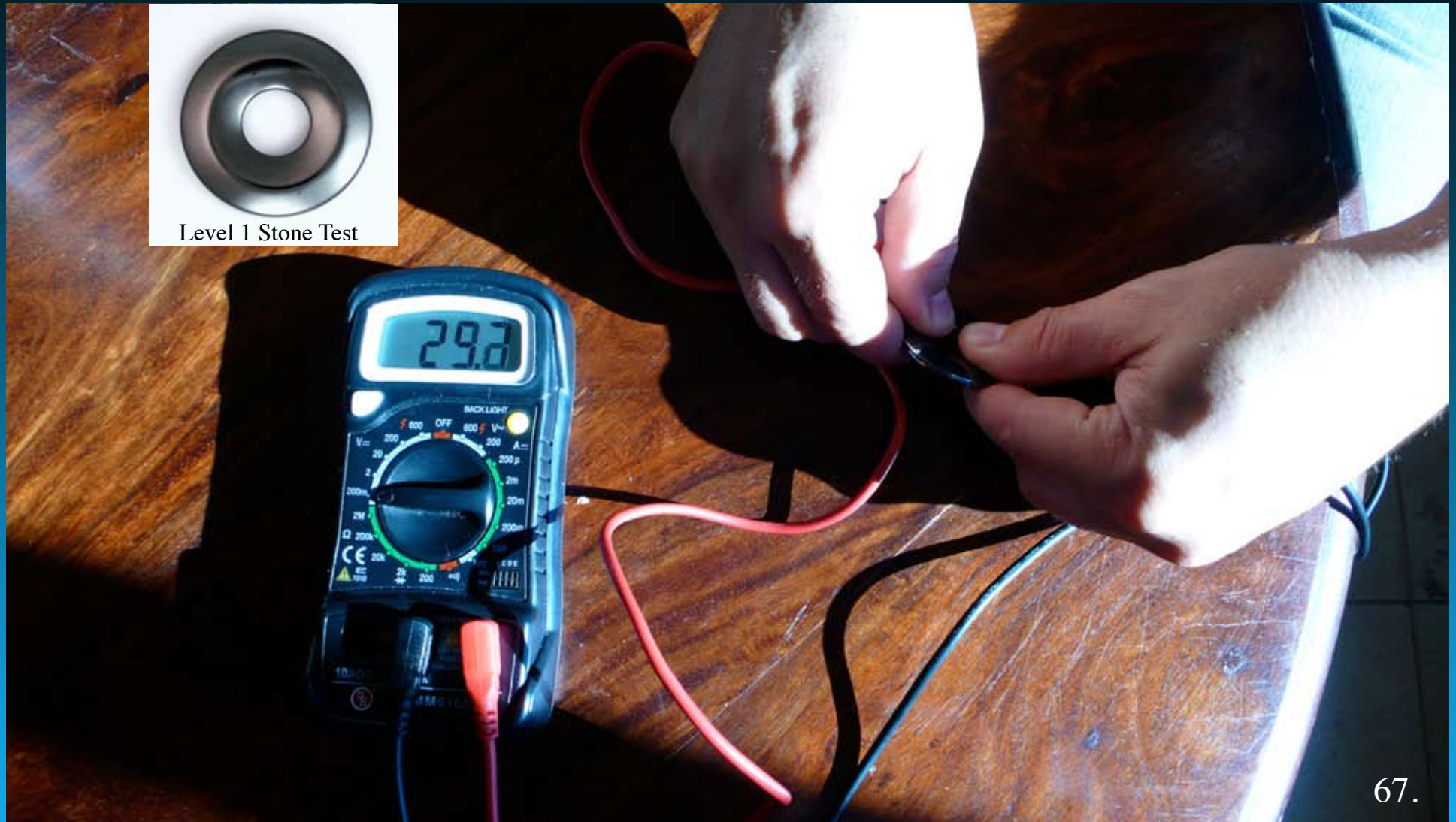
First, dip your thumb and index fingers in water to allow conductivity to increase for a more accurate measurement. Dry fingers actually do not allow for a true measurement to happen. What we want to do is measure your baseline before you even touch a Pendant.



Measuring my own body voltage, the numbers will oscillate due to activity in my nervous system. After not wearing my pendant for 2 1/2 days I am low at 44 millivolts. The human body has very little current. If I wear my stone regularly, I can be at 250 - 400 mV.



The Level 1 treated stone raises my bio-electrical energy flow in my body from 44 to 297 millivolts, nearly 1/3 of a full volt, with an initial reading. That is amazing! The stone acts as a conduit to zero point energy and allows more of that energy to flow.



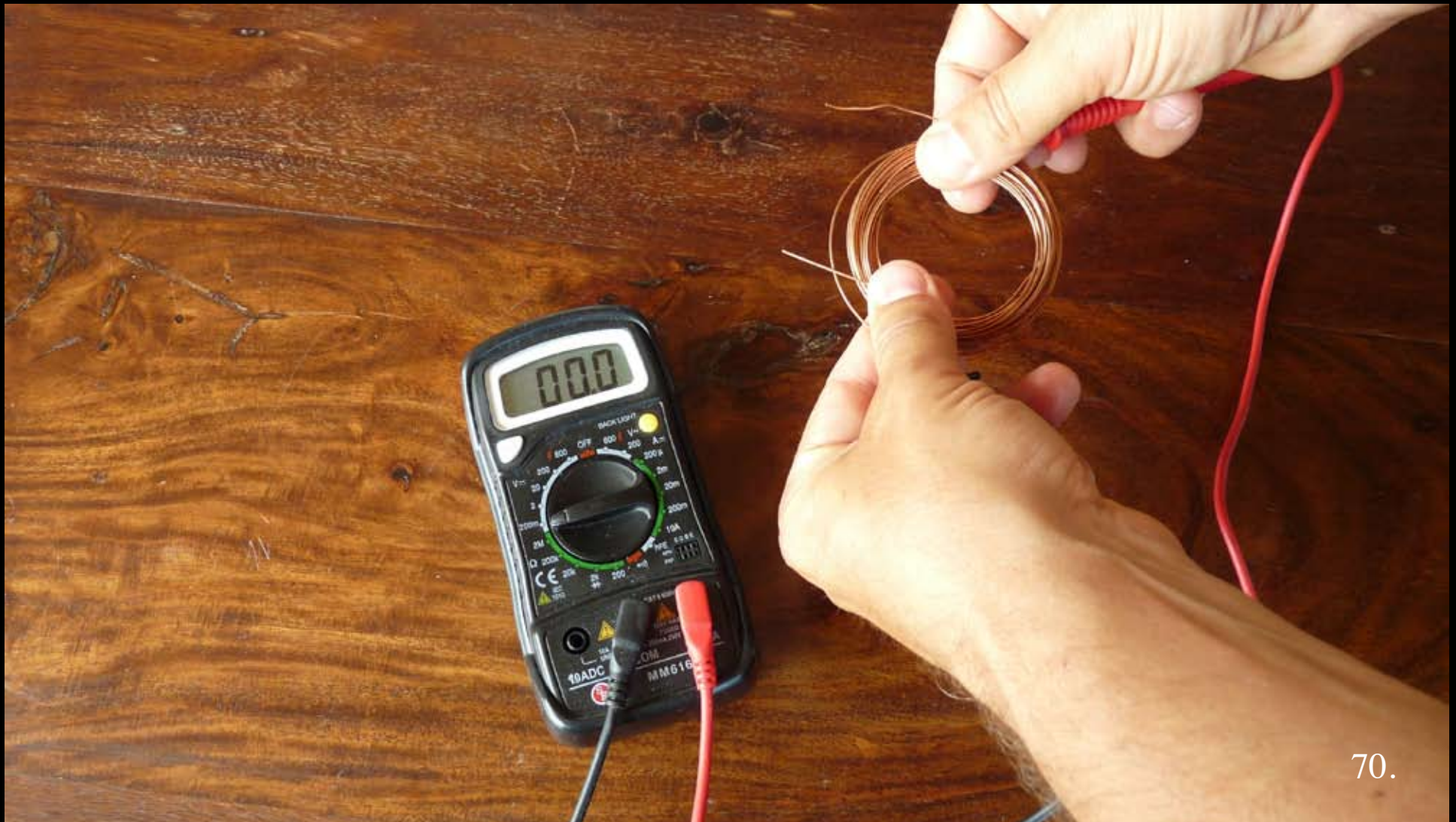
Using the 1/1000th (200 m) of a Volt setting on a standard volt meter, we can see that the stone itself carries no charge. This means it cannot be supplying voltage to the body. Remove decimal for Millivolts.



Now I will measure my baseline **before** I use a Level 2 Trinity Design Pendant. Notice my baseline is higher. This happens even after we let go of a level 1 we have been holding for a few minutes only if our baseline was very low, as mine was at 44 mV.



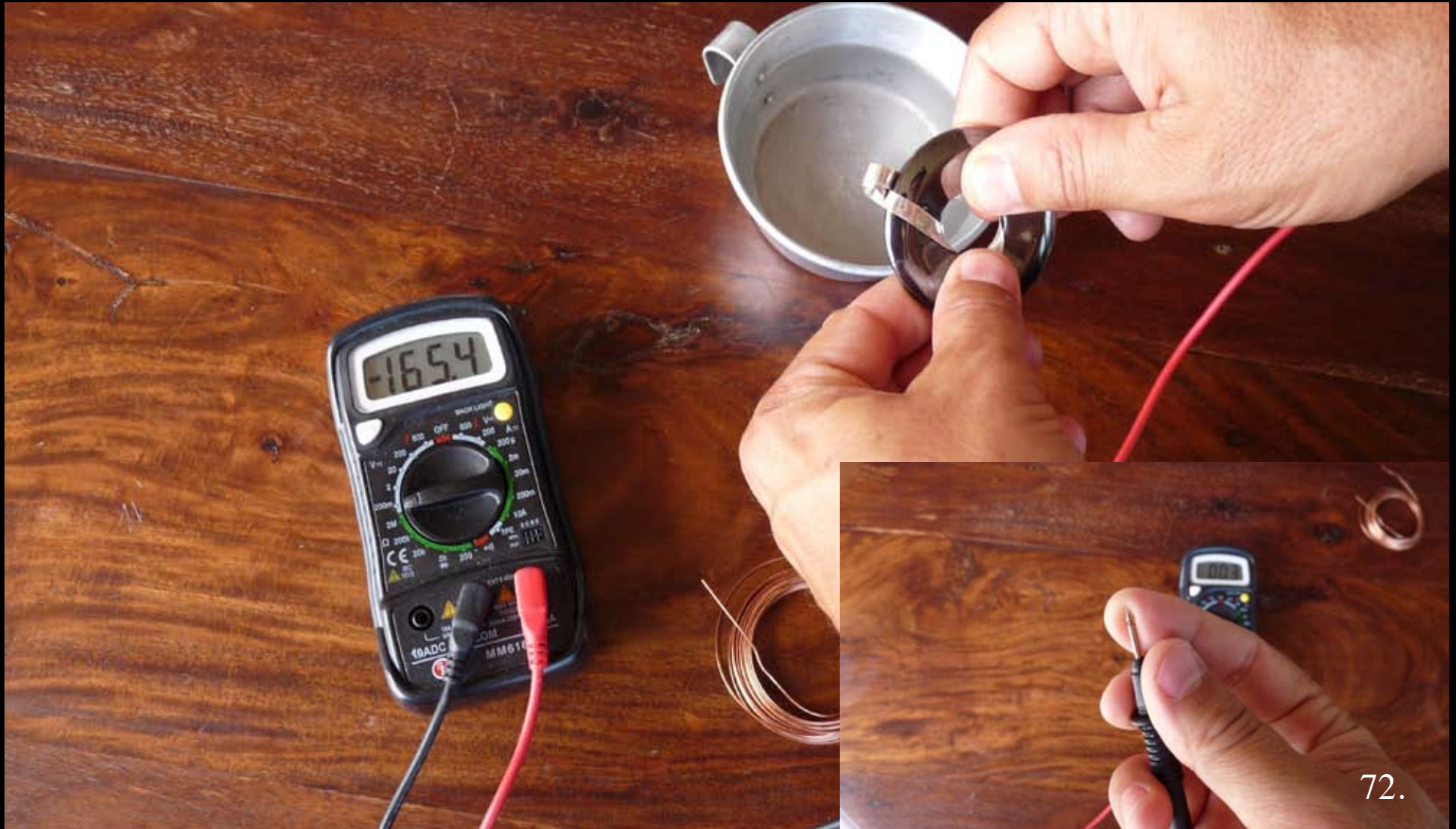
When I connect my fingers to wire and the red and black volt meter leads, we can see no voltage flows in the wire by itself. That is why when we measure voltage, the black and red leads must be placed on the stone in between and touching the wire.



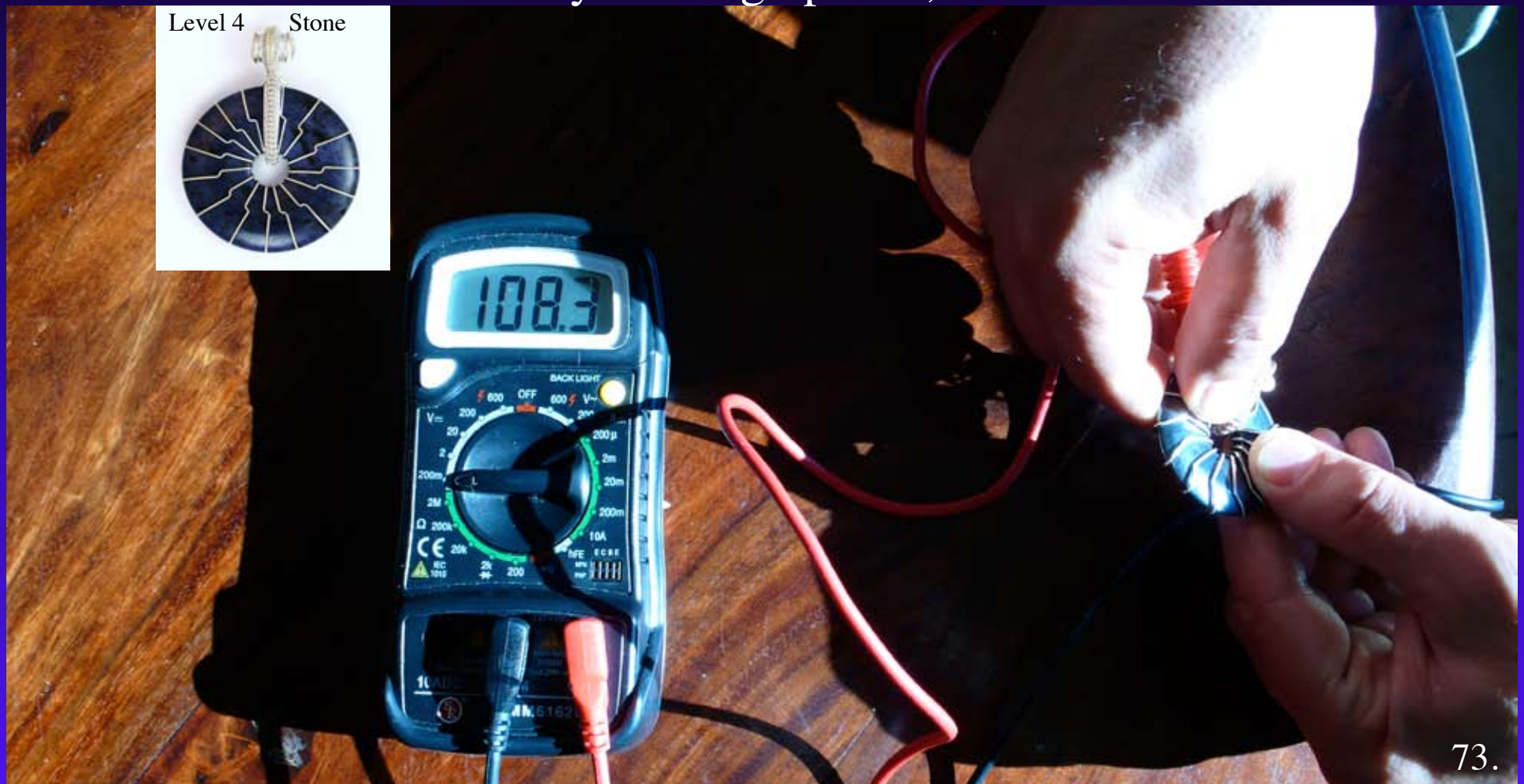
Place red (+) and black (-) along the silver and stone edge. Wet fingers. Pick up the stone between thumb and index fingers, right hand over red and left hand over black. Move around until you get a reading. This can be tricky. Play with it until you see real numbers. When your plugged into your nerves & the pendant properly, you will see high numbers; this is when you need to hold the position that yielded this firmly and steadily.



On this Level 2 Trinity Design Pendant, I go from a baseline of 110 Millivolts to 1,654 Millivolts and higher. Make sure fingers have black and red nodes at the nerve to get a reading. Then press right and left hand fingers over the pendant, without crossing wires. Hold down firmly so tips of nodes touch fingers, metal and stone simultaneously. This gives you an instant reading.



The Level 4 treated pendant raises my bio-electrical energy flow in my body from 44 to 1,083 millivolts, nearly 1.1 volts. That is amazing considering that super athletes work very hard to get their energy up to 2 volts! Numbers vary depending on stone match; see “Choosing Your Stone” right before the Catalog at the back of this e-book. Sometimes you can go past 2,000 millivolts.



Aura Testing

Before and During Wearing the Pendants



Without Pendant



With Level 1 Pendant

Stephen's aura is photographed before he was introduced to the pendant to establish a baseline aura reading. Seconds later, he holds the stone for only 2 minutes and we can see his aura with the pendant is much brighter gold and intense violet on his right side (where he is holding the pendant) and intense new yellow on his left side.

Aura Testing

Before and During Wearing the Pendants



Ron Lau Without Pendant



Ron Lau with Level 4

We can clearly see that Ron Lau's amazing white aura becomes even brighter and whiter close to his head while wearing the level 4 stone pendant. Many other people were tested with the aura camera and we found a consistency to the improvements of the aura for people wearing our pendants in a matter of 1-3 minutes.

Advanced **Aura** Testing

The GDV Is the most advanced human Aura Imaging Camera in the world today. It not only sees how much energy is coming out of each of the 7 chakras, it sees how well they are aligned, or how they are communicating with each other. It also sees the total energy field of the body and where there are energy breaks.

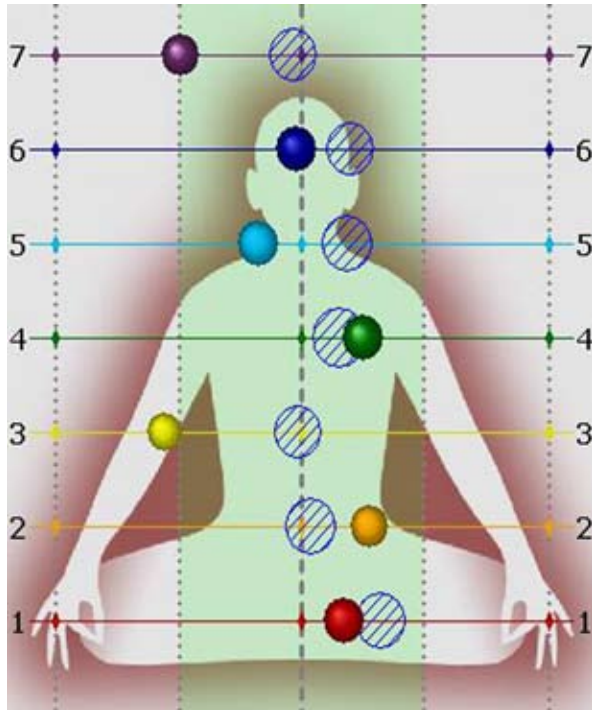
Krishna Madappa tested persons before and after wearing our Level 4 pendant. The results are astounding. There is a great improvement in the human energy field that can be seen from all possible angles.

The chakras are more aligned and more powerful. The total field is also much more powerful. See the images on the following pages from one person as a sample of the study.

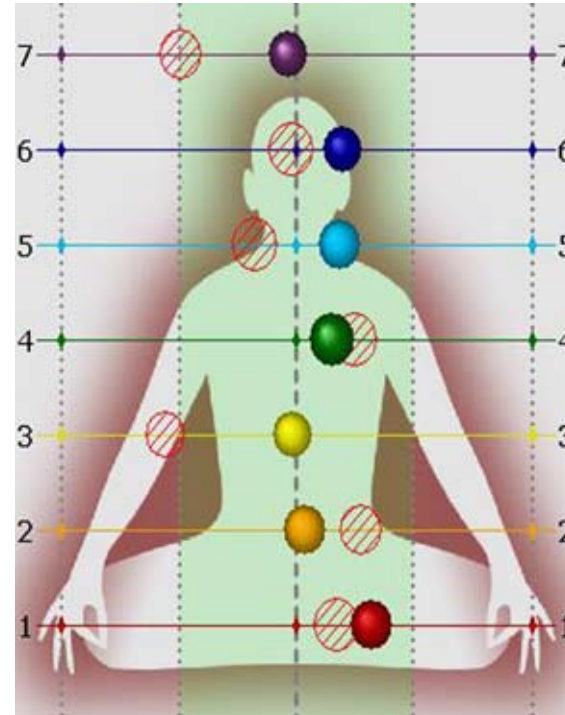
The Chakras - Before & After

Measuring Amplitude of Energy, Coherency & Balance from Left to Right

Before Wearing Level 4



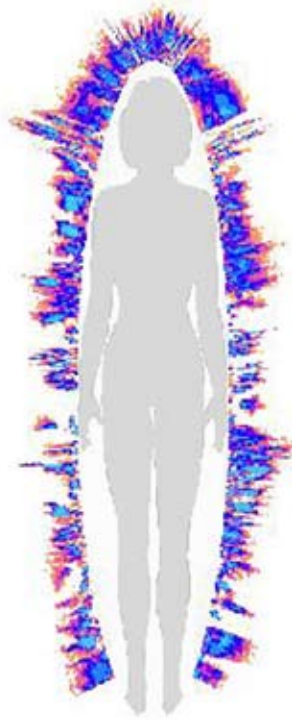
After Wearing Level 4



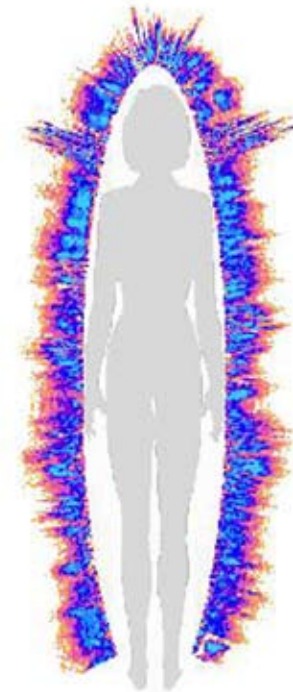
The before image shows the 7th crown chakra, and 3rd life force chakra out of balance. Other chakras are slightly out. After wearing the level 4 pendant, we can see a perfectly balanced crown chakra (purple), and more balance along all of the other chakras. There is also more energy coming out of the 2nd Chakra (orange), the heart chakra (green) and the crown chakra (purple). They are all larger, meaning more energy than before.

The Chakras - Before & After

Measuring Energy Flow of the Total Energy Field



Before Level 4 Pendant



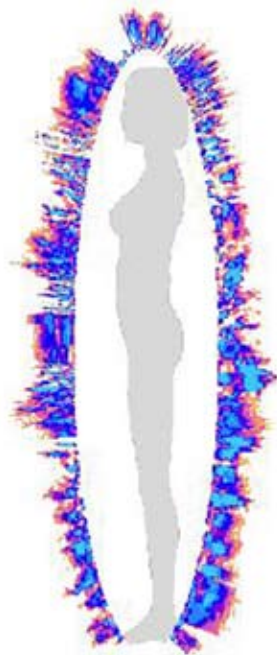
Subject 1, Capture 2 (no filter)

After Level 4 Pendant

We can see a very significant improvement of the total energy field of the aura after wearing the level 4 Pendant from the front view. The field is much more full and bright in all areas of the body.

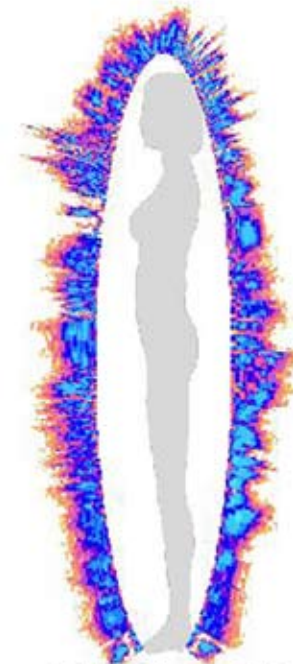
The Chakras - Before & After

Measuring the Total Energy Field



Subject 1, Capture 1 (no filter)

Before Level 4 Pendant Left View



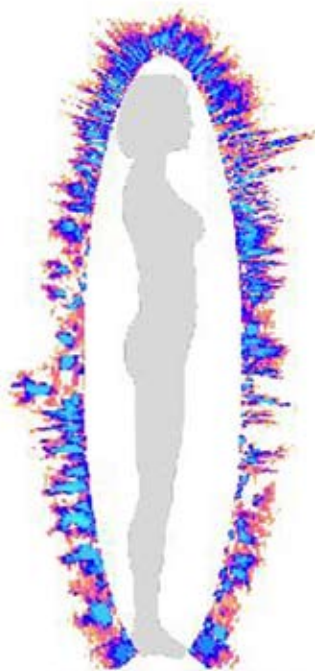
Subject 1, Capture 2 (no filter)

After Level 4 Pendant Left View

There are many energy breaks in this left view of the aura before the level 4 pendant is worn. After the pendant is worn, these energy breaks are much brighter and better as the data shows us. The top of the head is much more full as well. Energy breaks have restored themselves. This is amazing data!

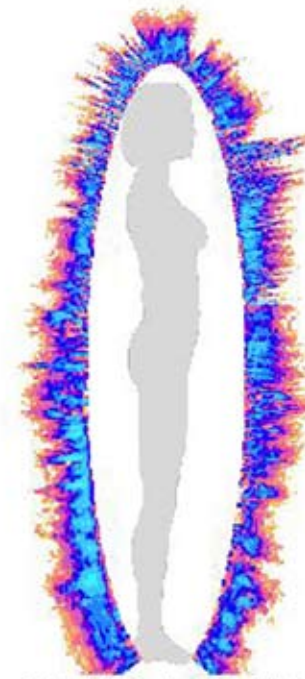
The Chakras - Before & After

Measuring The Total Energy Field



Subject 1, Capture 1 (no filter)

Before Level 4 Pendant Right View



Subject 1, Capture 2 (no filter)

After Level 4 Pendant Right View

Once again, we can see a significant improvement. The GDV aura camera testing is 3-D so we can see left and right and front sides of the aura. Notice the spine area is now much more full and vibrant with energy.

Volt Meter Testing of 100s of people

There is a consensus to our study that people who suffer from any nervous system disorders such as Multiple Sclerosis, Epilepsy, and Depression have very low millivolt readings. All of these individuals we tested went higher in millivolts after holding a Light Stream Technologies (L.S.T.) pendant for 2 minutes, being re-tested after letting go of the L.S.T. pendant.

From Wikipedia.org: Multiple Sclerosis is an autoimmune condition in which the immune system attacks the central nervous system, leading to demyelination. Disease onset usually occurs in young adults, and it is more common in females.

It has a prevalence that ranges between 2 and 150 per 100,000.[3] MS was first described in 1868 by Jean-Martin Charcot. MS affects the ability of nerve cells in the brain and spinal cord to communicate with each other. Nerve cells communicate by sending electrical signals called action potentials down long fibers called axons, which are wrapped in an insulating substance called myelin. In MS, the body's own immune system attacks and damages the myelin. When myelin is lost, the axons can no longer effectively conduct signals.

As more tests need to be done, wearing the L.S.T. pendants may show possible improvements in nervous system electrical conductivity. We legally disclaim anything and all claims of healing from our L.S.T. products due to the federal Laws that prohibit claims of healing that are not authorized by the AMA.

World Famous Scientist Dr. William Tiller Studied the Voltages of Psychics in 1997.

Dr. Tiller, William Tiller, Ph.D. (www.tiller.org) graduated with a B.A.Sc. in 1952 with a degree in Engineering Physics from the University of Toronto. He also has an M.A.Sc. and a Ph.D. from the University of Toronto. He worked for nine years in the Westinghouse Research Laboratory with theoretical and experimental investigation into the detailed physics of the freezing process of a wide range of materials; i. e., water, metals, semiconductors, oxides and polymers. He also investigated the relationships between the crystallization process and the detailed structure and properties of the solid. He exploited this knowledge of crystallization to generate new processes for ingot casting, material purification, single crystal growth, chemical crystallizers, etc.

Dr. Tiller has been a professor at Stanford University in the Department of materials science and Engineering. He has been a consultant to government and industry in the fields of metallurgy and solid-state physics and formerly Associate Editor of 2 scientific journals. He has published more than 250 scientific papers, three technical books and has five patents issued. His fields of specialization are crystal growth, surfaces and interfaces, physical metallurgy, semiconductor processing, thin film formation, computer simulation and psychoenergetics (70 additional publications in this area). He is also the founding director of the Academy of Parapsychology and Medicine and The Institute of Noetic Sciences.

Dr. Tiller found that the average voltage of human beings ranges from 0.010 - 0.015 volts. When human beings exhibited psychic abilities ranging from mental telepathy, healing or psychokinesis, their body voltage could be measured well above the range of the average mean above.

Out of hundreds of subjects tested with the L.S.T. pendants, there is a definite improvement in body voltages that can range from their baselines of less than 0.010 - 0.015 volts all the way past 2 full volts continuous.

Dr. Tiller has shown sudden short bursts from energy healers up to 30 full volts.

The idea of wearing the L.S.T. pendants is to improve your subtle energy levels for theoretically better thinking, faster action, better balance, and ultimately improved mental powers. These powers can go all the way to broadcasting a more powerful signal to apply to your own insights into the laws of attraction.

You may find people get your telepathic messages more clearly and you may also receive them more clearly. This is just as a radio that has a weak battery will not hear the radio station clearly.



Chapter 9

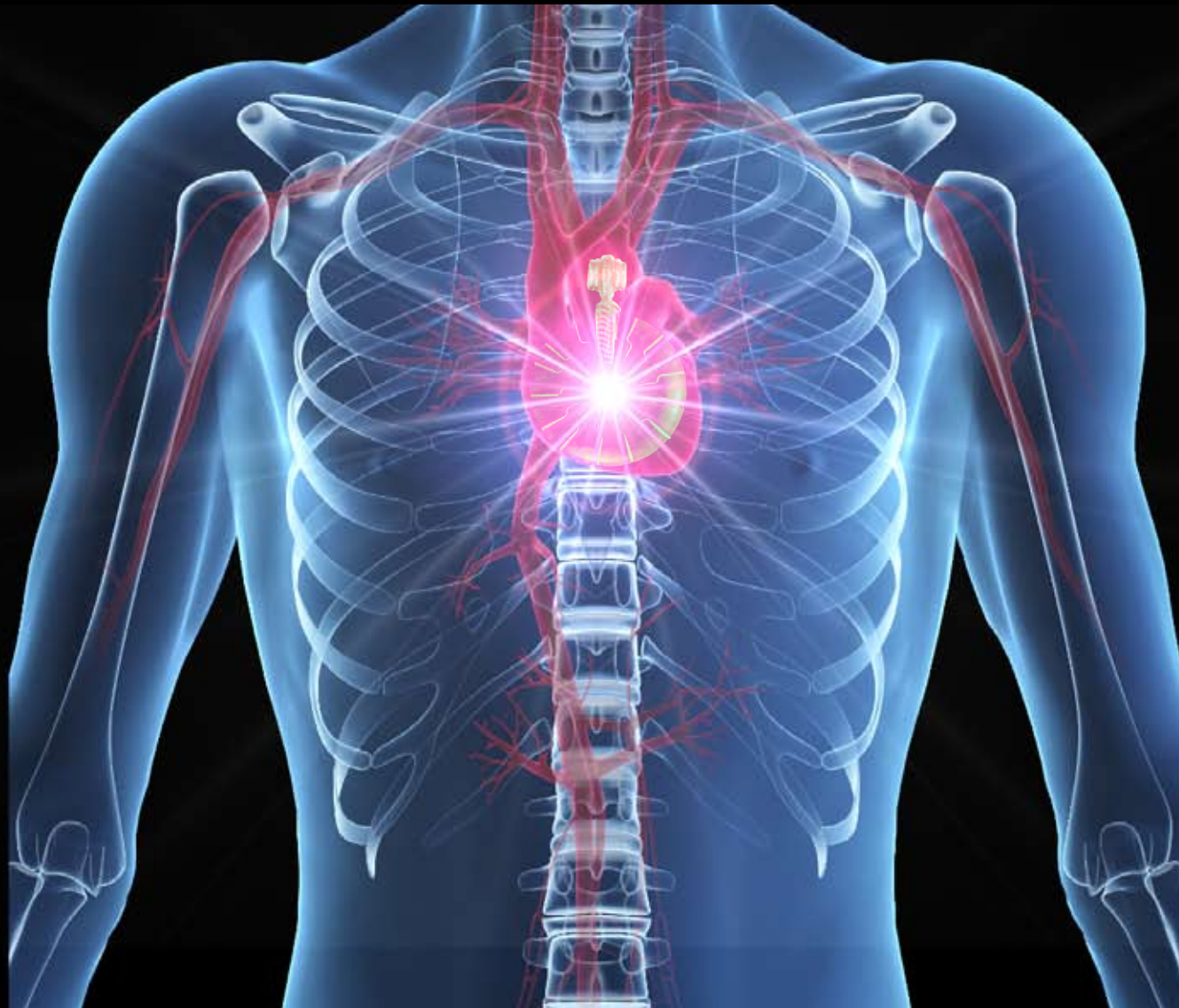
How to use your Light Stream Technologies'
Pendants!

You can wear your L.S.T. Pendant around your neck on a chain. The heart center is the strongest energy center of the body. At the Heart Math Institute, the human heart has been measured using sensitive EMF meters to be 30 to 60 times stronger than the brain. The heart is the true energy intelligence center of the body.



Wearing the stone around your neck near the heart center is the most beneficial way to use your stone piece. It is best if the pendant touches your skin.

The human heart produces an electromagnetic field that extends far beyond the body. This field can get polluted by Cell Phone, Satellite, TV and other Electromagnetic Pollution. Wear your pendant around the heart to help protect you from harmful EM fields.



The purpose of wearing blessed spiritual pendants around the heart is also for amplification of our prayers. The heart is the most powerful electromagnetic and subtle energy transmitter of the body.



The secret to the hidden power of stones is not merely decorative. The secret is to use the stone or crystal as a



communications device to help bridge human consciousness with the Divine! Stones serve as technology in the ancient world as well as the modern age!

The Stone Masons Knew the Secret to Gemstone Power - Wear your pendant near your heart!



Ways to use Your Pendants

1. You can choose a stone that resonates with you best. There are many colors and types of stones. Wear the stone near your heart center to help protect your heart from cell phone, satellite and TV Electromagnetic radiations.
2. You can warm your stone in warm to hot water and then place them along the spine according to your chakras after a massage. This can help enliven energy along the spine.
3. You can use your stone during meditation. They can help you meditate with more power. Hold the stone with your thumbs and index fingers left and right hand to get connected left and right brain. As your energy rises, you can then send your manifest desires out to the universe with more power and the law of attraction increases.
4. Athletes can use the stone before, during or after a performance, race, or event. If you cannot wear it during, it is best to wear the pendant for 3-7 days prior to a performance. Wearing or holding the pendant afterwards helps re-juvenate the system. Already, athletes use vigorous techniques to raise their body voltage. These stones can assist with that as we have seen the results on the volt meter.
5. Global Consciousness: Because the stone increases individual's body voltage while expanding their energy field, we can use groups of people to create Global Healing or to send out Global messages. When these groups send out prayers and messages while holding or wearing the stones, their messages will be sent with more energy & clarity. 89.

ASSESSING YOUR L.S.T. STONE

To reach your highest mV potential (Body Electricity/Energy), match your natural day to day energy with the subtle energy of a natural stone. The basic subtle energy of a stone is either a strong energy stone or a calming stone, which work in harmony with the technology that the natural stones are charged with. The L.S. Technology amplifies a stone's natural properties.

Calm/Mellow Personalities match with a Calming Stone.

A person may be assertive but not an aggressive personality; their demeanor is more reserved. They may also be energetic & outgoing at times, such as at social events, but not on a regular basis. This does not have to do with physical activities or sports; we are only assessing the personality and interaction with others.

Energetic, Enthusiastic or Vivacious Personalities match with a Strong Energy Stone.

People who are very outgoing or zealous on a regular basis, not just in social settings. They may be calm at times but generally have a lot of energy/vitality in their demeanor and enjoy talking a lot. Again, this does not necessarily have to do with how active they are in physical activities, as they may have a very energetic personality but show little or no interest in sports.

Genuinely Mixed Personalities match with a Tiger Iron, Mixed Material Stone.

Some people are genuinely both personalities on a regular basis. This does not apply to people who can switch under particular circumstances.

CALMING STONES:

Brazilian Blue Quartz (High Energy)

Green Aventurine (Medium Energy)

Rose Quartz (Soft Energy)

Brazilian Purple Lepidolite (Lightest Energy Stone- Best for very sensitive types)

STRONG ENERGY STONES:

Red Jasper (High Energy)

Hematite (High Energy & Grounding)

Tiger Iron (Medium Energy & Grounding)

In our tests we find that when a person is attracted to a particular color, this color ends up giving the highest mV reading for them and most of the time falls into the category that fits their personality.

Note:

A person may choose a stone opposite to their personality for a contrasting effect, such as a “wired” person who wants to calm down. Although this may not raise their body electricity as much as a strong energy stone, reaching the highest level in mVs may not be their priority.

Light Stream Technologies Catalog



All energy increases vary from person to person. The lowest energy increase doubles a person's natural energy when tested with a Level 1, but can reach 10 times this, depending on the person. Levels 2-6 will show the highest increases, on average 3-12 times a person's baseline.

Introduction

The pendants are made in a series of 6 levels, each with a design name. The design Levels and their corresponding names represent a mystical order of cosmic creation. The designs are not intended to represent a hierarchy. The levels and names focus on design, not necessarily energy potential.

Level 1-Source pendants are generally for people with low to moderate energy, focusing on those with low energy Levels; this is where a person will see a significant increase in energy levels. Using a conductive chain, such as silver, will raise the energy of a Level 1 even higher when a person wears it.

Levels 2 - 6 are comparable in energy increase potential, and therefore levels above Level 1 are not necessarily inferior to another in Millivolt (mV) meter testing.

For certain individuals it is best to start with a Level 1 and possibly stay at a level 1 depending on their circumstance. It is still beneficial for most people to wear a Level 1-Source regardless of their baseline, natural energy level. This is because the pendant will harmonize a person's field, as shown in the aura and chakra advanced tests earlier, even though it may not raise a person's energy level.

See Cautions for people with serious heart disease next.

Caution

Heart disease is the number 1 killer in the world taking 16.7 million lives world wide per year. It is important to note that Light Stream Pendants can increase our body millivolt energy, and theoretically may increase blood circulation. Therefore, we caution that persons with high blood pressure or history of a heart attack should only use a level 1 pendant. We caution that persons with advanced heart disease should “not” use our pendants at all, as we have no studies to demonstrate what may or may not happen in these cases.

Persons with any electrical devices for the heart such as pace maker or artificial valve, etc., should never wear our pendants. If they do, they do so at their own risk and assume all liability. Because the American Medical Association does not allow us to make any medical claims of healing as per using our pendants, we cannot also claim any medical liability since jewelry cannot possibly cause or aggravate any medical conditions.

Because our pendants are not radioactive, or radiative in any true meaning of the word, they cannot possibly cause or aggravate any medical condition, illness, or otherwise. We are therefore free of all liability of any claims against the pendants that may arise from your own misuse of them, such as slipping on them, swallowing them (child or adult), ingesting them in any way through any bodily opening including body piercing, grinding to a powder, or any imaginable way.

This caution is not meant to deter you from experimenting with our pendants, rather, it is legally required that we disclose to you any and all warnings and that you assume all liability for use.

The Catalog of Light Stream Technology Pendants!

Contact Your Light Stream Distributor Crystal Frost
CrystalLightStream@hotmail.com - 310-948-1592

Level I - SOURCE Reg. Size \$100 each, without chain



Rose Quartz



Green Aventurine



Brazilian Purple Lepidolite



Brazilian Blue Quartz

Level 1 - SOURCE Continued



Tiger Iron



Hematite



Red Jasper (Blue-based red)

Level 1 Fluorite Pendants \$100 each - Regular
Limited Supply- Color & patterns vary from stone to stone.

Fluorite is called the Genius Stone because of how it activates mental clarity and creativity.



All Level I Pendants are infused with L.S.T. Frequencies!

Level 1 Agates of different colors - \$100 Regular and \$110 Large.

Please specify which color tones you want! Green corresponds to the heart. - Limited Supply



Level 1 Brown Jasper \$100 Regular - Limited Supply

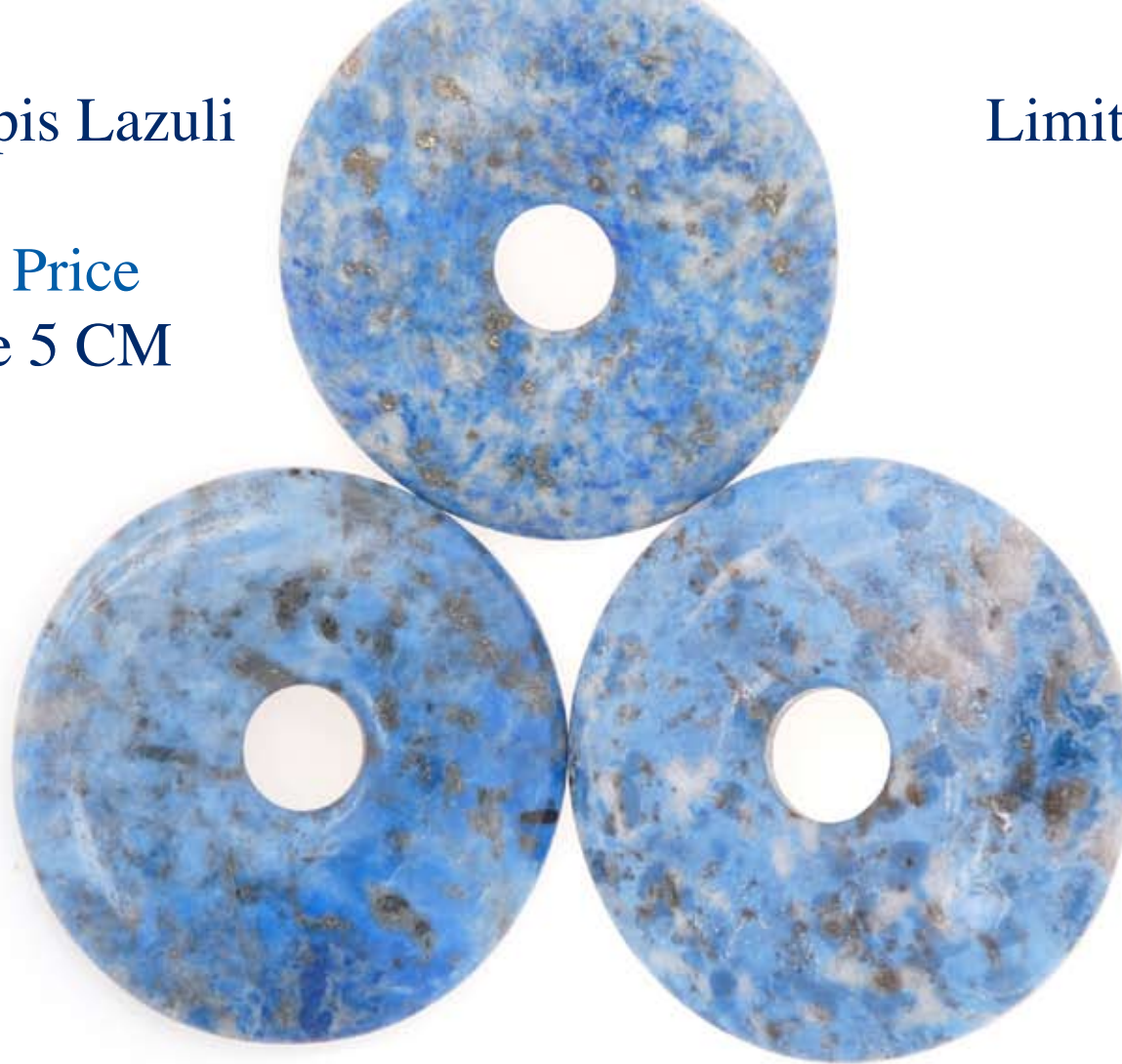
Magical Properties: Grounding, Reduces Fear and Anxiety, giving strength and purity of body.



Level 1 Lapis Lazuli

Limited Supply

\$135 Lapis Price
Extra Large 5 CM



Magical Properties: Used by the ancient Assyrians, Babylonians and the Egyptians. The Romans also considered Lapis to be an aphrodisiac. Lapis was highly praised by Pharaohs in Egypt as a mystical stone, for its emotional and mental healing properties.

Level 1 Purple Rhodelite with Veins Extra Large - \$120

Magical Properties: Calming, Soothing, Creativity and Vision
Inducing. - Limited Supply



Level 1 Orange Jade Regular - \$100

Magical Properties: Said to give Life Extending Powers.
Activates the inner fire. - Limited Supply



The Level 2 Trinity takes me on the
volt meter from 110 Millivolts to
1,654 Millivolts or 1.65 Volts.



The Trinity Design
Reflects the Toroid
shape of a Galaxy and
its 3 spiral arms.



Level 2 - TRINITY - Regular Size \$225 each



Brazilian Blue Quartz



Black Hematite



Green Aventurine



Rose Quartz

Level 2 - TRINITY - Continued



Tiger Iron



Red Jasper



Purple Lepidolite

Level 2 - Trinity Pendants come in our basic stone colors. They are all priced the same at \$225 in Reg. (4 cm) size. Some are gold filled and others silver. This design 99.9% silver, with no other material.

Level 3 - VORTEX - \$280

Energy Increase ex. 300 - 1,800 Millivolts



The vortex design refers to the natural way that energy flows in the galaxy, vortex black holes, nature, and the quantum universe. It is also the natural geometry shape of the chakra energy dynamic.

Level 3 - VORTEX Reg. Size \$280



Brazilian Blue Quartz



Green Aventurine



Black Hematite



Brazilian Purple Lepidolite

Level 3 VORTEX - Continued



Tiger Iron



Red Jasper



Rose Quartz

Level 4 - SUN RAY Reg. Size \$300

Energy Increase Ex.: from 500 to 1,900 Millivolts

Level 4 comes in Silver,
Gold Fill or 2-Tone



Green Aventurine

Magical Qualities: Intellect and intelligence

Level 4 - SUN RAY Reg. Size \$300



Level 4 - SUN RAY - Regular Size - \$300



Rose Quartz

Magical Properties: Love, Compassion, Gentleness

Level 4 - SUN RAY Reg. Size - \$300



Brazilian Purple Lepidolite

Magical Qualities: Soothe, Relax and De-Stress, Sleep and Visions

Level 4 - SUN RAY Reg. Size - \$300



Red Jasper

Magical Properties: Blood purifier, heart, passion.

Level 4 SUN RAY Reg. Size - \$300



Tiger Iron

Properties: Contains properties of Jasper, Tiger Eye and Hematite.^{115.}

Level 4 - SUN RAY Reg. Size \$300



Brazilian Blue Quartz

This stone causes more people to pass a record 2,000 mV.

Level 5 - FLOWER OF LIFE \$450



Hematite with Garnet

Level 5 - Reg. size FLOWER OF LIFE - \$450



Rose Quartz & Amethyst



Brazilian Blue Quartz & Topaz

Custom Order Example: Level 5 - FLOWER OF LIFE
\$485 - Custom Price on selected design colors.



Mix any available regular size stone with Citrine, Garnet, Peridot,
Amethyst, Blue or White Topaz.

Level 5 Customs are offered in Gold Fill, Silver, 2-Tone or 18 karat solid gold wrap; contact L.S.T. for 18k gold pricing.



Available in any precious gemstone such as ruby, emerald, sapphire, diamond, etc.

Level 6 - ETERNAL LIGHT - \$325



Pure Quartz Crystal - Limited supply until April, 2010

Special New Products

All Light Stream Products are unique to other stone pendants because they are infused with Light Stream Proprietary Technology designed and invented by David Sereda.

Be aware of knock off and copycat that is not David Sereda's Light Stream Technologies!

Spa Massage Stones

Treated with L.S.T. - We Present to you Infused Massage Stone technology! Get an energy treatment while being massaged!

Set of 5 Stones
with Wooden Box
\$495 Retail



Traditional massage stones are a wonderful treatment at a spa. Now you can get a massage with warm stones that are infused with the sacred harmonic codes and the NASA Sound of the Sun to heal your body at the level of its energetic field.

Spiritual Vibration Stone Pendants

In addition to being treated with Tachyons, the NASA Sound of the Sun, Tree of Life, Sacred Geometries and the Hidden Harmonic Codes, we can add specific religious chants to the treatment. Currently, we have The Christian Lord's Prayer in Aramaic, Authentic deep Buddhist Chanting and the Hindu Mantra "Om."



Traditionally, if a monk, nun or native of any religion were to pray with their beads, crosses, stone relics, or stone temple, it would take decades to hold the prayer in the stone, wood, or material. Using our Quantum Generators, we condense this process of vibrating jewelry and stone to hold the power of spiritual prayers.

Treatment is an additional \$40 flat fee for 1-4 pendants, \$80 flat fee for 5-9 pendants and 10 or more pendants are free.

Contact Your Light Stream Distributor Crystal Frost
CrystalLightStream@hotmail.com - 310-948-1592